

Product datasheet for **AM31921PU-N**

PPP2R1A Mouse Monoclonal Antibody [Clone ID: 4E6]

Product data:

Product Type:	Primary Antibodies
Clone Name:	4E6
Applications:	ELISA, IHC, WB
Recommended Dilution:	ELISA. Immunohistochemistry on Paraffin Sections: 5 µg/ml. Western Blot: 1/500 - 1/1000.
Reactivity:	Human
Host:	Mouse
Isotype:	IgG1
Clonality:	Monoclonal
Immunogen:	Recombinant protein
Specificity:	This antibody recognizes Human PPP2R1A
Formulation:	PBS, pH 7.2 State: Purified State: Liquid purified Ig fraction
Concentration:	lot specific
Purification:	Protein A Chromatography
Conjugation:	Unconjugated
Storage:	Store the antibody undiluted at 2-8°C for one month or (in aliquots) at -20°C for longer. Avoid repeated freezing and thawing.
Stability:	Shelf life: one year from despatch.
Gene Name:	protein phosphatase 2 scaffold subunit Aalpha
Database Link:	Entrez Gene 5518 Human P30153



[View online »](#)

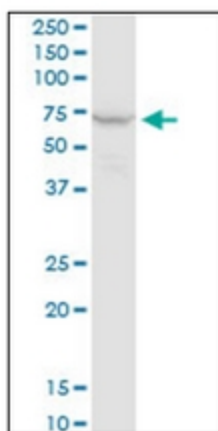
Background: This gene encodes a constant regulatory subunit of protein phosphatase 2. Protein phosphatase 2 is one of the four major Ser/Thr phosphatases, and it is implicated in the negative control of cell growth and division. It consists of a common heteromeric core enzyme, which is composed of a catalytic subunit and a constant regulatory subunit, that associates with a variety of regulatory subunits. The constant regulatory subunit A serves as a scaffolding molecule to coordinate the assembly of the catalytic subunit and a variable regulatory B subunit. This gene encodes an alpha isoform of the constant regulatory subunit A.

Synonyms: Protein phosphatase 2A, PP2A subunit A PR65-alpha isoform, PP2A subunit A R1-alpha isoform

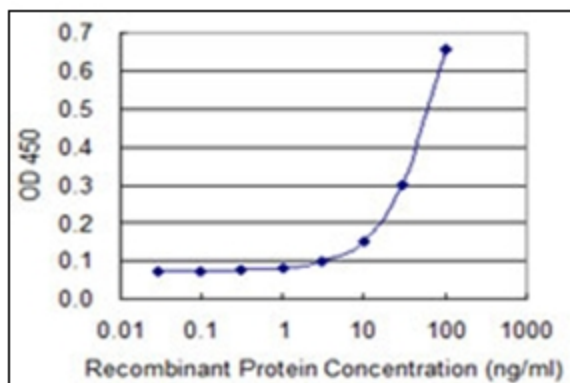
Protein Families: Druggable Genome, Phosphatase, Transcription Factors

Protein Pathways: Long-term depression, Oocyte meiosis, TGF-beta signaling pathway, Tight junction, Wnt signaling pathway

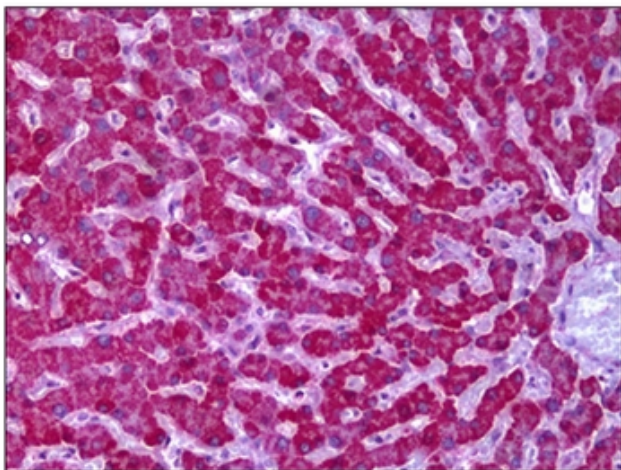
Product images:



Western Blot analysis of PPP2R1A expression in Jurkat cell lysate using PPP2R1A monoclonal antibody, clone 4E6.



Detection limit for recombinant GST tagged PPP2R1A is 3 ng/ml as a capture antibody.



Human Liver: Formalin-Fixed, Paraffin-Embedded (FFPE)