

## Product datasheet for **AM31915PU-N**

### MDH1 (101-193) Mouse Monoclonal Antibody [Clone ID: 1D2]

#### Product data:

Product Type:	Primary Antibodies
Clone Name:	1D2
Applications:	ELISA, IHC, WB
Recommended Dilution:	<b>ELISA.</b> <b>Immunohistochemistry on Paraffin Sections:</b> 5 µg/ml. <b>Western Blot:</b> 1/500 - 1/1000.
Reactivity:	Human
Host:	Mouse
Isotype:	IgG2a
Clonality:	Monoclonal
Immunogen:	Recombinant protein encoding amino acids 101 to 193 of Human MDH1
Specificity:	This antibody recognizes MDH1 at aa 101-193.
Formulation:	PBS, pH 7.4 State: Purified State: Liquid purified Ig fraction
Concentration:	lot specific
Purification:	Protein A Chromatography
Conjugation:	Unconjugated
Storage:	Store undiluted at 2-8°C for one month or (in aliquots) at -20°C for longer. Avoid repeated freezing and thawing.
Stability:	Shelf life: one year from despatch.
Gene Name:	malate dehydrogenase 1
Database Link:	<a href="#">Entrez Gene 4190 Human P40925</a>
Background:	Malate dehydrogenase catalyzes the reversible oxidation of malate to oxaloacetate, utilizing the NAD/NADH cofactor system in the citric acid cycle. Malate dehydrogenase 1 (MDH1) is localized to the cytoplasm and may play pivotal roles in the malate-aspartate shuttle that operates in the metabolic coordination between cytosol and mitochondria.



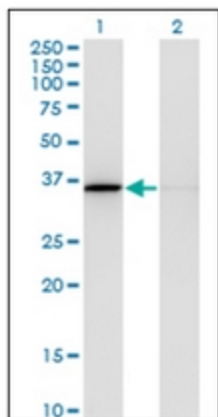
[View online »](#)

**Synonyms:** MDHA, Malate dehydrogenase, cytoplasmic

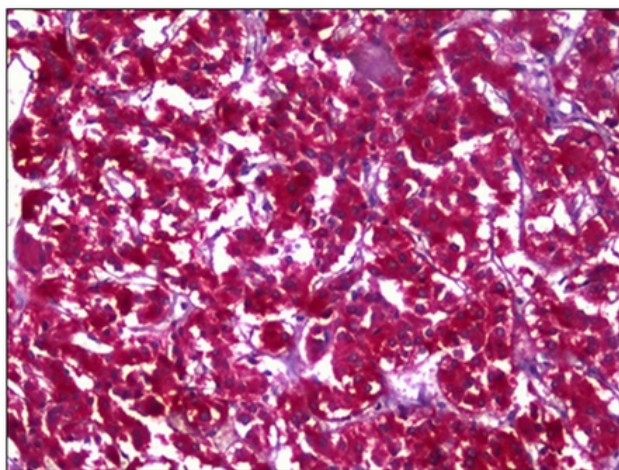
**Protein Families:** Druggable Genome

**Protein Pathways:** Citrate cycle (TCA cycle), Glyoxylate and dicarboxylate metabolism, Metabolic pathways, Pyruvate metabolism

**Product images:**



Western Blot analysis of MDH1 expression in transfected 293T cell line by MDH1 monoclonal antibody, clone 1D2.



Human Adrenal: Formalin-Fixed, Paraffin-Embedded (FFPE)