

Product datasheet for **AM31912PU-N**

HLA Class II DR Mouse Monoclonal Antibody [Clone ID: TDR31.1]

Product data:

Product Type:	Primary Antibodies
Clone Name:	TDR31.1
Applications:	FC, IHC, WB
Recommended Dilution:	Flow Cytometry. Immunohistochemistry on Frozen Sections. Immunohistochemistry on Paraffin Sections: 10 µg/ml. Western Blot.
Reactivity:	Human
Host:	Mouse
Isotype:	IgG1
Clonality:	Monoclonal
Immunogen:	Purified (With Antibiotics) class II from JY cell line.
Specificity:	Monomorphic class II beta chain epitope.
Formulation:	50 mM Sodium Phosphate, pH 7.5, 100 mM Potassium Chloride, 150 mM Sodium Chloride, 0.5 mg/ml Gentamicin Sulfate State: Purified State: Liquid purified Ig fraction
Concentration:	lot specific
Purification:	Protein A Chromatography
Conjugation:	Unconjugated
Storage:	Store the antibody undiluted at 2-8°C. DO NOT FREEZE!
Stability:	Shelf life: one year from despatch.



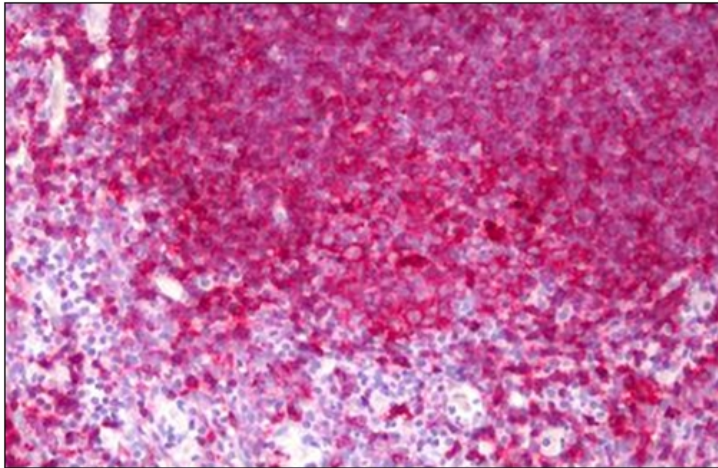
[View online »](#)

Background:

MHC Class II antigens are heterodimers consisting of one alpha chain(31-34kD) and one beta chain (26-29kD). The family of monoclonal antibodies (ER-TR 3, ER-TR 2, ER-TR 1) detect MHC class II antigens encoded by the murine Ia region of the H-2 complex, corresponding to the human HLA-DR region. MHC Class II antigens are a valuable tool for studying T helper cell interaction with class II positive antigen presenting cells (dendritic cells, B cells, macrophages) and offer new possibilities for studying the development of T helper cells since these antibodies also stain stromal cells in the thymus. MHC Class II antigens are also inducible on a number of other cells (endothelium and epithelial cells) by interferon gamma.

Synonyms:

HLA-DR, HLA class II histocompatibility antigen DR, MHC class II antigen DR

Product images:

Human Tonsil: Formalin-Fixed, Paraffin-Embedded (FFPE)