

## Product datasheet for **AM31911SU-N**

### **SHP1 (PTPN6) Mouse Monoclonal Antibody [Clone ID: 14D5]**

#### **Product data:**

Product Type:	Primary Antibodies
Clone Name:	14D5
Applications:	ELISA, IHC, WB
Recommended Dilution:	<b>ELISA.</b> <b>Immunohistochemistry on Paraffin Sections:</b> 1/200. <b>Western Blot:</b> 1/2000.
Reactivity:	Human
Host:	Mouse
Isotype:	IgG1
Clonality:	Monoclonal
Immunogen:	Recombinant Human protein purified from E. coli (His/ABD-SHP1)
Specificity:	Recognizes Human PTPN6.
Formulation:	HEPES with 0.15M NaCl, 0.01% BSA, 0.03% Sodium Azide and 50% Glycerol State: Purified State: Liquid
Purification:	Ammonium Sulfate Precipitation
Conjugation:	Unconjugated
Storage:	Store the antibody undiluted at 2-8°C for one month or (in aliquots) at -20°C for longer. Avoid repeated freezing and thawing.
Stability:	Shelf life: one year from despatch.
Gene Name:	protein tyrosine phosphatase, non-receptor type 6
Database Link:	<a href="#">Entrez Gene 5777 Human P29350</a>



[View online »](#)

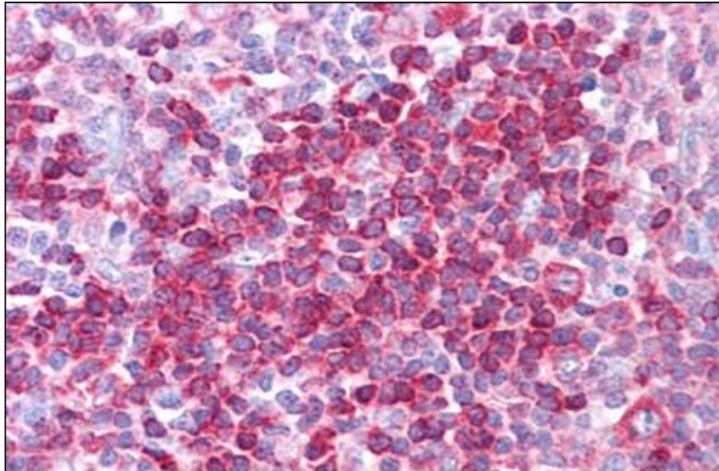
**Background:** SHP1, a NT2 non-receptor protein tyrosine phosphatase, contains two tandem Src homology 2 (SH2) domains. SHP1 has been implicated in the regulation of a multiplicity of signaling pathways involved in hemopoietic cell growth, differentiation, and activation. SHP1 has been shown to interact with a broad spectrum of tyrosine kinases such as c-Kit, CSF-1 receptor, TrkA, epidermal growth factor receptors, cytokine receptors such as IL-3, IFN-alpha/beta, erythropoietin receptors, and receptors of the immune system such as CD22. At least two protein isoforms of SHP1 have been reported.

**Synonyms:** PTPN-6, HCP, PTP1C, Protein-tyrosine phosphatase 1C, PTP-1C, SH-PTP1, Protein-tyrosine phosphatase SHP-1

**Protein Families:** Druggable Genome, Phosphatase, Stem cell - Pluripotency

**Protein Pathways:** Adherens junction, B cell receptor signaling pathway, Jak-STAT signaling pathway, Natural killer cell mediated cytotoxicity, T cell receptor signaling pathway

**Product images:**



Human Tonsil: Formalin-Fixed, Paraffin-Embedded (FFPE).