

Product datasheet for **AM31910SU-N**

MAP4K1 Mouse Monoclonal Antibody [Clone ID: 2A1]

Product data:

Product Type:	Primary Antibodies
Clone Name:	2A1
Applications:	IHC, IP, WB
Recommended Dilution:	Immunohistochemistry on Paraffin Sections: 1/200. Immunoprecipitation. Western Blot: 1/5000.
Reactivity:	Human
Host:	Mouse
Isotype:	IgG1
Clonality:	Monoclonal
Immunogen:	Recombinant Human protein purified from E. coli (His/ABD-HPK1)
Specificity:	Recognizes Human MAP4K1.
Formulation:	HEPES with 0.15M NaCl, 0.01% BSA, 0.03% Sodium Azide and 50% Glycerol State: Purified State: Liquid purified Ig fraction
Concentration:	lot specific
Purification:	Ammonium Sulfate Precipitation
Conjugation:	Unconjugated
Storage:	Store undiluted at 2-8°C for one month or (in aliquots) at -20°C for longer. Avoid repeated freezing and thawing.
Stability:	Shelf life: one year from despatch.
Gene Name:	mitogen-activated protein kinase kinase kinase kinase 1
Database Link:	Entrez Gene 11184 Human Q92918



[View online »](#)

Background:

HPK1, a KHS protein kinase, is an upstream activator of the stress-activated protein kinase (SAPK) signaling pathway. The protein has a structure similar to other GCK (Group I) kinases and contains four consensus SH3 binding motifs, which have been shown to interact with the SH3 motifs of the MAP kinase kinase kinases MLK3 and MEKK1 and several adapter proteins that couple to tyrosine kinases, including BASH, Blnk, Clnk, Crk, CrkL and Grb2. Additionally, HPK1 has been shown to be phosphorylated and activated by the tyrosine kinase c-Abl in response to genotoxic agents. At least two mRNA transcripts have been reported.

Synonyms:

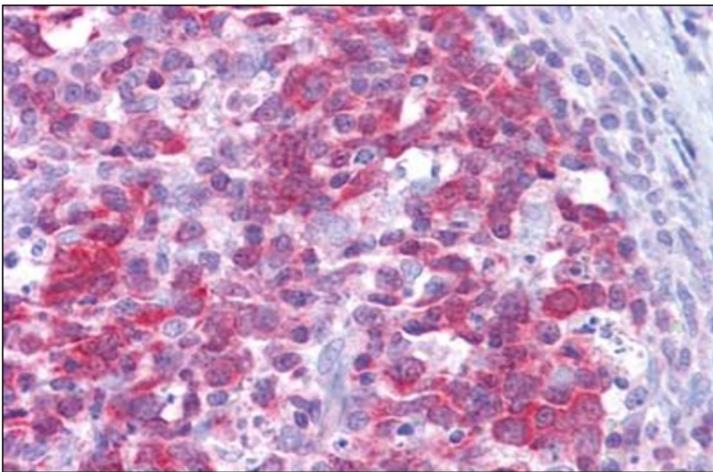
MEKKK 1, MAPK/ERK kinase kinase 1, HPK1

Protein Families:

Druggable Genome, Protein Kinase

Protein Pathways:

MAPK signaling pathway

Product images:

Human Tonsil: Formalin-Fixed, Paraffin-Embedded (FFPE)