

## Product datasheet for **AM31909SU-N**

### Complement C9 (C9) Mouse Monoclonal Antibody [Clone ID: 64E9]

#### Product data:

Product Type:	Primary Antibodies
Clone Name:	64E9
Applications:	IHC, WB
Recommended Dilution:	<b>Immunohistochemistry on Paraffin Sections:</b> 1/200. <b>Western Blot:</b> 1/2000.
Reactivity:	Human
Host:	Mouse
Isotype:	IgG1
Clonality:	Monoclonal
Immunogen:	Protein purified from Human plasma.
Specificity:	Recognizes Human Complement C9.
Formulation:	HEPES with 0.15M NaCl, 0.01% BSA, 0.03% Sodium Azide and 50% Glycerol State: Liquid
Concentration:	lot specific
Purification:	Ammonium Sulfate Precipitation
Conjugation:	Unconjugated
Storage:	Store the antibody undiluted (in aliquots) at -20°C. Avoid repeated freezing and thawing.
Stability:	Shelf life: one year from despatch.
Gene Name:	complement component 9
Database Link:	<a href="#">Entrez Gene 735 Human P02748</a>



[View online »](#)

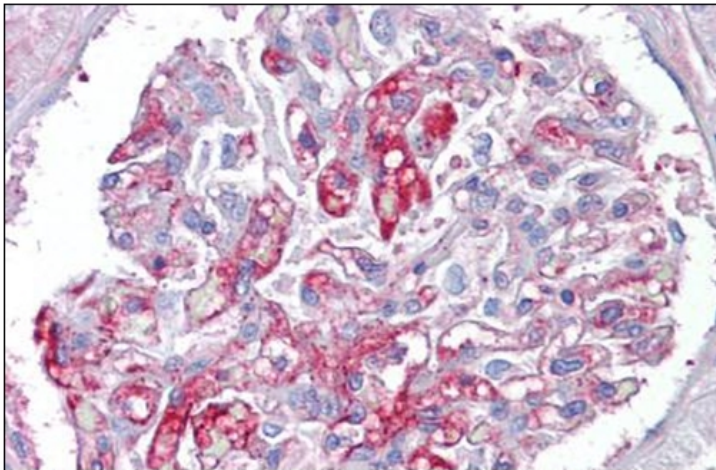
**Background:** C9 is synthesised in the liver and monocytes, and is a plasma protein consisting of a single polypeptide chain of molecular weight 71kDa. Normal plasma concentration is 60mg/L. C9 forms part of the membrane attack complex (MAC) the cytolytic terminal complex of the complement pathways. C9 binds to the membrane associated C5b-8, binding of C9 to C5b-8 leads to the circular polymerisation of 12-18 C9 molecules. This is the basis of the hydrophilic, proteinwalled, trans-membrane channel formed by the MAC, which leads to cell lysis and destruction.

**Synonyms:** Complement component C9, Complement 9

**Protein Families:** Druggable Genome

**Protein Pathways:** Complement and coagulation cascades, Prion diseases, Systemic lupus erythematosus

**Product images:**



Human Kidney: Formalin-Fixed, Paraffin-Embedded (FFPE)