

## Product datasheet for **AM31907PU-N**

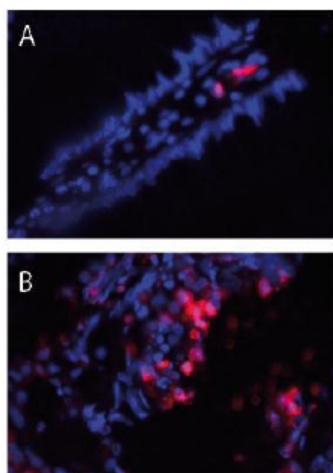
### **MRP8/14 (S100A8/A9) Mouse Monoclonal Antibody [Clone ID: FP 64]**

#### Product data:

<b>Product Type:</b>	Primary Antibodies
<b>Clone Name:</b>	FP 64
<b>Applications:</b>	ELISA, IF, IHC
<b>Recommended Dilution:</b>	<b>ELISA.</b> <b>Immunocytochemistry.</b> <b>Immunohistochemistry on Paraffin Sections:</b> 1/1000.
<b>Reactivity:</b>	Human
<b>Host:</b>	Mouse
<b>Isotype:</b>	IgG1
<b>Clonality:</b>	Monoclonal
<b>Immunogen:</b>	Human MRP8 and MRP14 heterocomplex.
<b>Specificity:</b>	This antibody detects Subpopulation of Human Macrophages, Monocytes and Granulocytes. Peripheral blood monocytes carry the antigen extra and intracellularly, Neutrophils only interacellularly. This antibody also detects Subpopulation of Macrophages of Rhesus Monkey.
<b>Formulation:</b>	PBS, pH 7.4 State: Purified State: Lyophilized purified IgG fraction Preservative: 0.09% Sodium Azide
<b>Reconstitution Method:</b>	Restore in aqua bidest to 1 mg/ml
<b>Purification:</b>	Protein G Chromatography
<b>Conjugation:</b>	Unconjugated



<b>Storage:</b>	<p>Store lyophilized at 2–8°C for 6 months or at –20°C long term.</p> <p>After reconstitution store the antibody undiluted at 2–8°C for one month or (in aliquots) at –20°C long term.</p> <p>Avoid repeated freezing and thawing.</p>
<b>Stability:</b>	Shelf life: one year from despatch.
<b>Background:</b>	<p>MRP8 and MRP14 are members of the S100 family of proteins containing 2 EF hand calcium binding motifs. S100 proteins are localized in the cytoplasm and/or nucleus of a wide range of cells, and involved in the regulation of a number of cellular processes such as cell cycle progression and differentiation. S100 genes include at least 13 members which are located as a cluster on chromosome 1q21.</p>
<b>Synonyms:</b>	Calgranulin A/B, Calprotectin, L1 Protein, CFAG, P8, P14, CAGA, CAGB, CFAG, MRP–8, MRP–14
<b>Product images:</b>	



Immunofluorescence image of Calprotectin staining of Paraffin section of Human colon carcinoma. The sections were incubated with Calprotectin Antibody Cat.-No AM31907PU (1/500), followed by Goat-anti Mouse antibody coupled to Cy3. Nuclei stained with DAPI. A