

Product datasheet for **AM31902PU-N**

Salivary alpha amylase (AMY1A) (172-246) Mouse Monoclonal Antibody [Clone ID: 2D4]

Product data:

Product Type:	Primary Antibodies
Clone Name:	2D4
Applications:	ELISA, IHC, WB
Recommended Dilution:	ELISA. Immunohistochemistry on Paraffin Sections: 5 µg/ml. Western Blot: 1/500 - 1/1000.
Reactivity:	Human
Host:	Mouse
Isotype:	IgG2a
Clonality:	Monoclonal
Immunogen:	AMY1A (NP_001008222, 172 a.a. ~ 246 a.a) partial recombinant protein with GST tag
Specificity:	Recognizes AMY1A at aa 172-246.
Formulation:	PBS, pH 7.4 State: Purified State: Liquid purified Ig fraction
Concentration:	lot specific
Purification:	Protein A Chromatography
Conjugation:	Unconjugated
Storage:	Upon receipt, store undiluted (in aliquots) at -20°C. Avoid repeated freezing and thawing.
Stability:	Shelf life: one year from despatch.
Gene Name:	amylase, alpha 1A (salivary)
Database Link:	Entrez Gene 277 Human Entrez Gene 276 Human P04745



[View online »](#)

Background:

Amylases are secreted proteins that hydrolyze 1,4 alpha glucoside bonds in oligosaccharides and polysaccharides. They catalyze the first step in digestion of dietary starch and glycogen. Alternative splicing results in multiple transcript variants encoding the same protein. Salivary Amylase is a digestive enzyme secreted by salivary glands, it consists of a single polypeptide chain with a molecular weight of 56kDa (family B) or 62kDa (family A), the difference in molecular weight being due to the presence or absence of a carbohydrate moiety.

The total serum concentration of amylase is about 120g/L of which about 50% is salivary amylase.

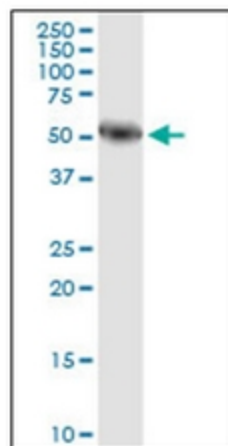
Although salivary amylase and pancreatic amylase share 95% amino acid sequence homology, they differ in molecular size, isoelectricpoint and antigenic properties.

Synonyms:

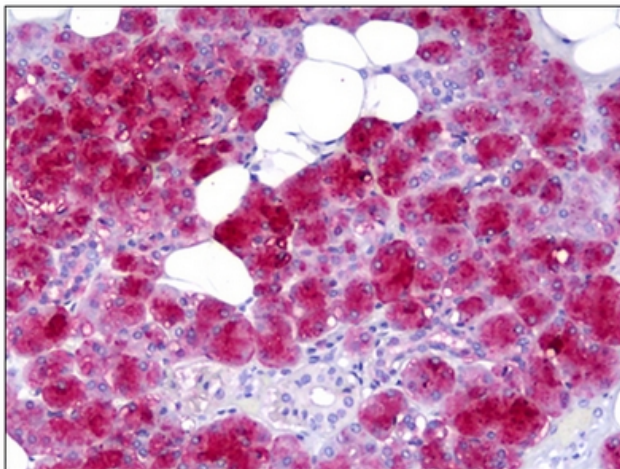
Salivary alpha-amylase, AMY1A

Protein Pathways:

Metabolic pathways, Starch and sucrose metabolism

Product images:

Western Blot analysis of AMY1A expression in Human pancreas using AMY1A monoclonal antibody, clone 2D4.



Human Salivary Gland, Formalin-Fixed, Paraffin-Embedded (FFPE)