

Product datasheet for **AM31901PU-N**

RICTOR (1-99) Mouse Monoclonal Antibody [Clone ID: 1F3]

Product data:

Product Type:	Primary Antibodies
Clone Name:	1F3
Applications:	ELISA, IHC, IP, WB
Recommended Dilution:	ELISA. Immunohistochemistry on Paraffin Sections: 5 µg/ml. Immunoprecipitation. Western Blot: 1/500 - 1/1000.
Reactivity:	Human
Host:	Mouse
Isotype:	IgG2b
Clonality:	Monoclonal
Immunogen:	RICTOR (NP_689969, 1 a.a. ~ 99 a.a) partial recombinant protein with GST tag
Specificity:	Recognizes RICTOR at aa 1-99.
Formulation:	PBS, pH 7.2 State: Purified State: Liquid purified Ig fraction
Concentration:	lot specific
Purification:	Protein A Chromatography
Conjugation:	Unconjugated
Storage:	Store the antibody undiluted at 2-8°C for one month or (in aliquots) at -20°C for longer. Avoid repeated freezing and thawing.
Stability:	Shelf life: one year from despatch.
Gene Name:	RPTOR independent companion of MTOR complex 2
Database Link:	Entrez Gene 253260 Human Q6R327



[View online »](#)

Background:

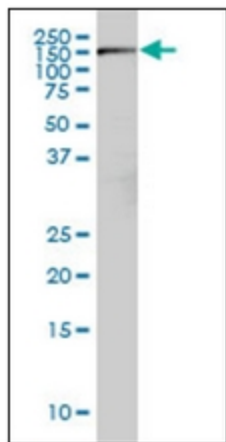
The mTOR pathway (mammalian target of rapamycin) coordinates nutrient signals with growth factor dependent signaling. Recent data revealed that mTOR is organized in two independent protein complexes: The complex containing mTOR, GbL and RAPTOR is target of rapamycin while the complex containing mTOR, GbL and RICTOR is insensitive to rapamycin. The mTOR /RICTOR complex phosphorylates PKBalpha/akt1 at Serine 473

Synonyms:

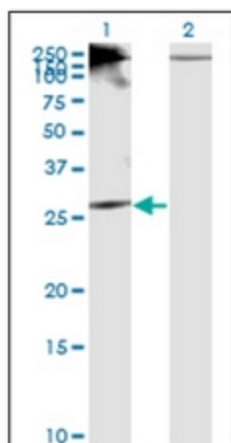
KIAA1999, Rapamycin-insensitive companion of mTOR, mAVO3

Protein Pathways:

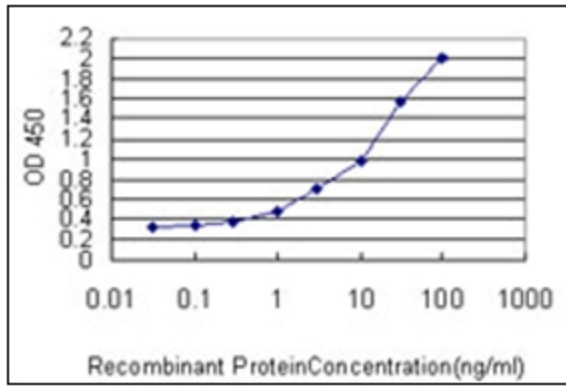
mTOR signaling pathway

Product images:

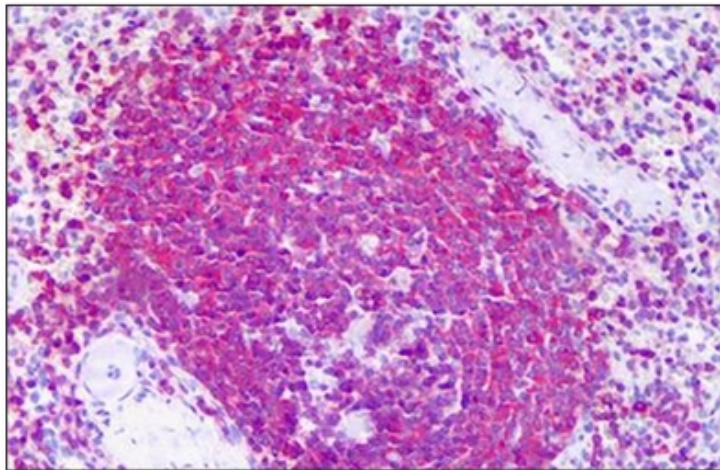
Western Blot analysis of RICTOR expression in Hela NE using RICTOR monoclonal antibody clone 1F3.



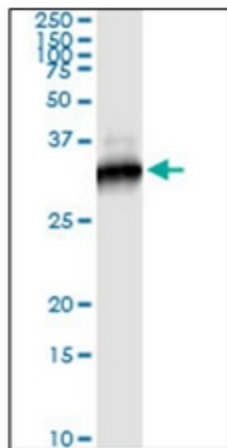
Western Blot analysis of RICTOR expression in transfected 293T cell using RICTOR monoclonal antibody clone 1F3.



Detection limit for recombinant GST tagged RICTOR is approximately 0.03ng/ml as a capture antibody.



Human Spleen: Formalin-Fixed, Paraffin-Embedded (FFPE)



Immunoprecipitation of RICTOR transfected lysate using anti-RICTOR monoclonal antibody and Protein A Magnetic Bead, and immunoblotted with RICTOR Rabbit polyclonal antibody.