

## Product datasheet for **AM31900PU-N**

### PRAGMIN (PRAG1) (2-102) Mouse Monoclonal Antibody [Clone ID: 5C6]

#### Product data:

Product Type:	Primary Antibodies
Clone Name:	5C6
Applications:	ELISA, IHC
Recommended Dilution:	<b>ELISA.</b> <b>Immunohistochemistry on Paraffin Sections:</b> 5 µg/ml.
Reactivity:	Human
Host:	Mouse
Isotype:	IgG2a
Clonality:	Monoclonal
Immunogen:	SGK223 antibody was raised against dKFZp761P0423 (XP_291277, 2 a.a. ~ 102 a.a) partial recombinant protein with GST tag.
Specificity:	Recognizes SGK223 / PRAGMIN at aa 2-102.
Formulation:	PBS, pH 7.4 State: Purified State: Liquid purified Ig fraction
Concentration:	lot specific
Purification:	Protein A Chromatography
Conjugation:	Unconjugated
Storage:	Store the antibody undiluted at 2-8°C for one month or (in aliquots) at -20°C for longer. Avoid repeated freezing and thawing.
Stability:	Shelf life: one year from despatch.
Gene Name:	PEAK1 related, kinase-activating pseudokinase 1
Database Link:	<a href="#">Entrez Gene 157285 Human Q86YV5</a>
Background:	PRAGMIN is also known as SGK223 (sugen kinase 223). The rat homolog was originally identified in a yeast two-hybrid screen for Rnd2 effector proteins expressed in neural cells. Rat Pragmin was found to stimulate RhoA activity for the regulation of neurite outgrowth.

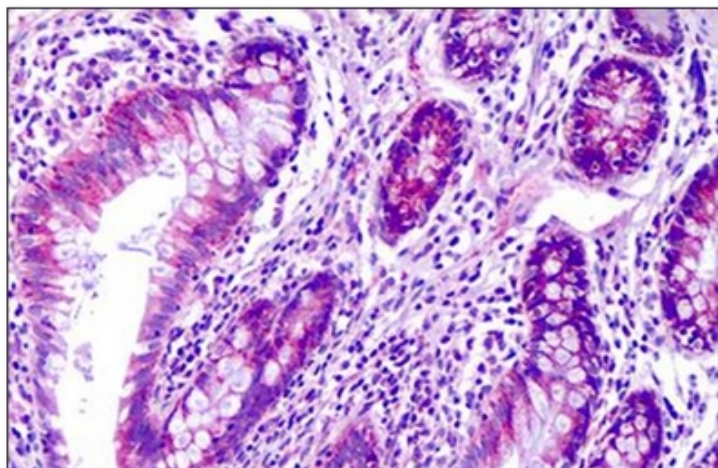


[View online »](#)

**Synonyms:** Sugen kinase 223, PRAGMIN

**Protein Families:** Protein Kinase

**Product images:**



Human Colon: Formalin-Fixed, Paraffin-Embedded (FFPE)