

## Product datasheet for **AM31893PU-N**

### CLIC5 (91-191) Mouse Monoclonal Antibody [Clone ID: 1E6]

#### Product data:

Product Type:	Primary Antibodies
Clone Name:	1E6
Applications:	ELISA, IHC, WB
Recommended Dilution:	<b>ELISA:</b> <b>Immunohistochemistry on Paraffin Sections:</b> 10 µg/ml. <b>Western Blot:</b> 1/500 - 1/1000.
Reactivity:	Human
Host:	Mouse
Isotype:	IgG2a
Clonality:	Monoclonal
Immunogen:	CLIC5 (NP_058625, 91 a.a. ~ 191 a.a) partial recombinant protein with GST tag.
Specificity:	Recognizes CLIC5 at aa 91-191.
Formulation:	PBS, pH 7.2 State: Purified State: Liquid purified Ig fraction
Concentration:	lot specific
Purification:	Protein A Chromatography
Conjugation:	Unconjugated
Storage:	Store the antibody undiluted at 2-8°C for one month or (in aliquots) at -20°C for longer. Avoid repeated freezing and thawing.
Stability:	Shelf life: one year from despatch.
Gene Name:	chloride intracellular channel 5
Database Link:	<a href="#">Entrez Gene 53405 Human Q9NZA1</a>
Background:	Chloride intracellular channels are involved in chloride ion transport within various subcellular compartments. CLIC5 specifically associates with the cytoskeleton of placenta microvilli.

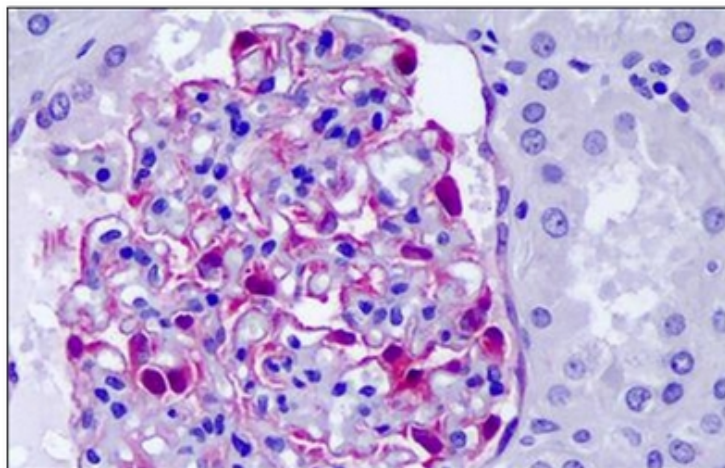


[View online »](#)

**Synonyms:** Chloride intracellular channel protein 5

**Protein Families:** Druggable Genome, Ion Channels: Other

**Product images:**



Human Kidney, Glomeruli: Formalin-Fixed, Paraffin-Embedded (FFPE)