

Product datasheet for **AM31892PU-N**

RAGEF2 (RAPGEF6) (1012-1111) Mouse Monoclonal Antibody [Clone ID: 2C5]

Product data:

| | |
|-----------------------|---|
| Product Type: | Primary Antibodies |
| Clone Name: | 2C5 |
| Applications: | ELISA, IF, IHC, WB |
| Recommended Dilution: | ELISA. Immunofluorescence: 40 µg/ml. Immunohistochemistry on Paraffin Sections: 5 µg/ml. Western Blot: 1/500 - 1/1000. |
| Reactivity: | Human |
| Host: | Mouse |
| Isotype: | IgG2a |
| Clonality: | Monoclonal |
| Immunogen: | RAPGEF6 (NP_057424, 1012 a.a. ~ 1111 a.a) partial recombinant protein with GST tag. |
| Specificity: | Recognizes RAPGEF6 at aa 1012-1111. |
| Formulation: | PBS, pH 7.2 State: Purified State: Liquid purified Ig fraction |
| Concentration: | lot specific |
| Purification: | Protein A Chromatography |
| Conjugation: | Unconjugated |
| Storage: | Store the antibody undiluted at 2-8°C for one month or (in aliquots) at -20°C for longer. Avoid repeated freezing and thawing. |
| Stability: | Shelf life: one year from despatch. |
| Gene Name: | Rap guanine nucleotide exchange factor 6 |
| Database Link: | Entrez Gene 51735 Human Q8TEU7 |



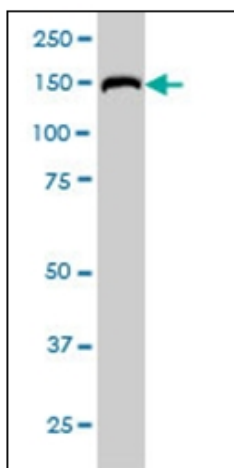
[View online »](#)

Background:

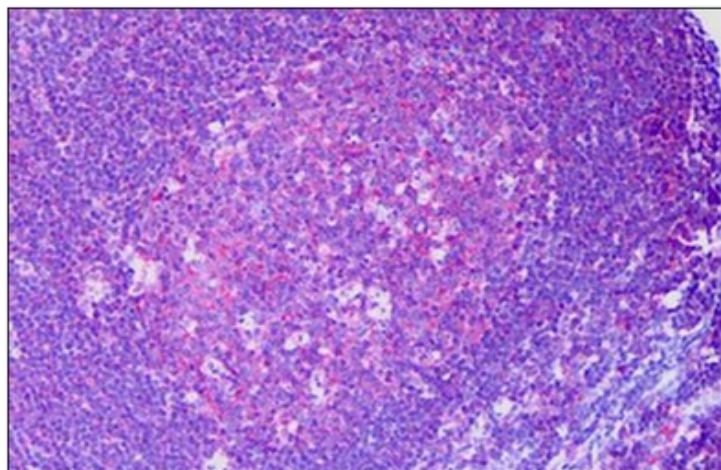
RAGEF2 is a guanine nucleotide exchange factor (GEF) for Rap GTPases. It contains one PDZ-signaling domain, a Ras-association (RA) domain, and a region related to a cyclic nucleotide binding domain (RCBD). RAGEF2 functions to catalyze the exchange of GDP for GTP and activate Rap1A, Rap1B, and Rap2B GTPase activity. RAGEF2 has been shown to activate Rap1A and Rap1B to promote the maturation of cell-cell adherens junctions.

Synonyms:

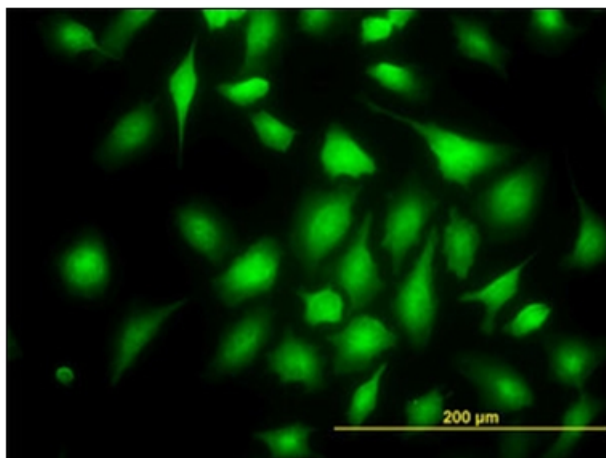
RA-GEF-2, PDZGEF2, PDZ-GEF2

Product images:

RAPGEF6 Antibody, in Western Blot analysis of RAPGEF6 expression in HeLa NE.



Human Tonsil, Germinal Center: Formalin-Fixed, Paraffin-Embedded (FFPE)



Immunofluorescence of monoclonal antibody to RAPGEF6 on HeLa cell at 40 ug/ml.