

Product datasheet for **AM31884FC-N**

CD11a / ITGAL Rat Monoclonal Antibody [Clone ID: IBL-6/2]

Product data:

Product Type:	Primary Antibodies
Clone Name:	IBL-6/2
Applications:	FC
Recommended Dilution:	This clone has been reported to work in immunohistochemistry (acetone-fixed frozen sections), flow cytometry and immunoprecipitation. The FITC conjugated format is especially useful for direct flow cytometry.
Reactivity:	Mouse
Host:	Rat
Isotype:	IgG1
Clonality:	Monoclonal
Immunogen:	EL4 (mouse thymoma cell line) <u>Donor:</u> Wistar spleen <u>Fusion Partner:</u> Sp-2/0Ag14
Specificity:	Anti-mouse CD11a monoclonal antibody (Clone: IBL-6/2) recognizes the LFA-1 (CD11a) antigen in mice. The LFA-1 is expressed on leukocytes and it mediates cell-cell and cell-adhesion by binding to CD54 and ICAM-2).
Formulation:	PBS containing 0.02% sodium azide (NaN ₃) as preservative and EIA grade BSA as a stabilizing protein to bring total protein concentration to 4-5 mg/ml. Label: FITC State: Liquid purified Ig fraction Label: Fluorescein isothiocyanate isomer 1
Concentration:	lot specific
Purification:	Affinity chromatography on Protein G
Conjugation:	FITC
Storage:	Store the antibody undiluted at 2-8°C for one month or (in aliquots) at -20°C for longer. Avoid repeated freezing and thawing.
Stability:	Shelf life: one year from despatch.
Database Link:	P24063



[View online »](#)

Synonyms: Integrin alpha-L, LFA1, LFA-1

Note: Protocol: **FLOW CYTOMETRY ANALYSIS:**

Method:

1. Prepare a cell suspension in media A. For cell preparations, deplete the red blood cell population with Lympholyte®-M cell separation medium.
2. Wash 2 times.
3. Resuspend the cells to a concentration of 2×10^7 cells/ml in media A. Add 50 μ l of this suspension to each tube (each tube will then contain 1×10^6 cells, representing 1 test).
4. To each tube, add 0.5 – 0.2 μ g of this antibody per 10^6 cells.
5. Vortex the tubes to ensure thorough mixing of antibody and cells.
6. Incubate the tubes for 30 minutes at 4°C. (It is recommended that the tubes are protected from light, since most fluorochromes are light sensitive.)
7. Wash 2 times at 4°C.
8. Resuspend the cell pellet in 50 μ l ice cold media B.
9. Transfer to suitable tubes for flow cytometric analysis containing 15 μ l of propidium iodide at 0.5 mg/ml in PBS. This stains dead cells by intercalating in DNA.

Media:

- A. Phosphate buffered saline (pH 7.2) + 5% normal serum of host species + sodium azide (100 μ l of 2M sodium azide in 100 mls).
- B. Phosphate buffered saline (pH 7.2) + 0.5% Bovine serum albumin + sodium azide (100 μ l of 2M sodium azide in 100 mls).

Results:

Tissue Distribution by Flow Cytometry Analysis:

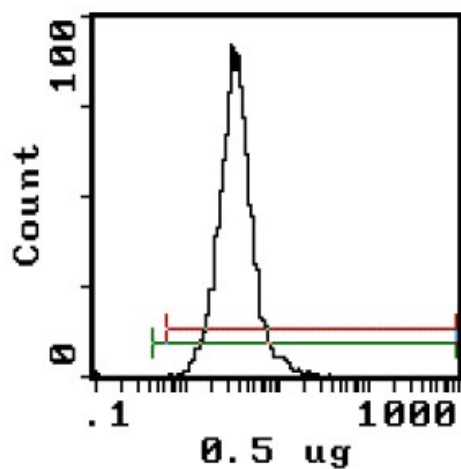
Mouse Strain: BALB/c

Cell Concentration: 1×10^6 cells per test

Antibody Concentration Used: 0.2 μ g/ 10^6 cells

Isotypic Control: FITC Rat IgG1

Product images:



Cell Source: Lymph Node Percentage of cells stained above control: 99.6%