

## Product datasheet for **AM31881PU-N**

### **Pdcd1 Hamster Monoclonal Antibody [Clone ID: J43]**

#### **Product data:**

Product Type:	Primary Antibodies
Clone Name:	J43
Applications:	FC
Recommended Dilution:	<b>Flow Cytometry.</b>
Reactivity:	Mouse
Host:	Hamster
Isotype:	IgG
Clonality:	Monoclonal
Immunogen:	PD-1 cDNA transfectant. Donor: mouse ascites fluid. Fusion Partner: Mouse myeloma P3U1.
Specificity:	This Monoclonal Antibody reacts with Mouse PD-1 (Programmed Death-1).
Formulation:	PBS containing 0.02% Sodium Azide as preservative State: Purified State: Liquid purified IgG fraction
Concentration:	lot specific
Purification:	Protein G Chromatography
Conjugation:	Unconjugated
Storage:	Store the antibody undiluted at 2-8°C for one month or (in aliquots) at -20°C for longer. Avoid repeated freezing and thawing.
Stability:	Shelf life: one year from despatch.
Gene Name:	programmed cell death 1
Database Link:	<a href="#">Entrez Gene 18566 Mouse Q02242</a>



[View online »](#)

**Background:**

CD279 is 50-55kD membrane protein which is a member of the CD28 family, and functions mainly as a negative regulator of T-cell activation. CD279 has two specific ligands; CD274 (PD-L1) and CD273 (PD-L2), and their interaction is key in the balance between stimulatory and inhibitory signals needed for effective immune responses to microbes and self-tolerance. CD279 is inducibly expressed by T-cells, B-cells, NK-T-cells and monocytes upon activation. Loss of CD279 function has been associated with a number of autoimmune diseases, including rheumatoid arthritis, type I diabetes and ankylosing spondylitis. Recent studies suggest that CD279 could be targeted therapeutically in the treatment of HIV infection to reduce T-cell exhaustion.

**Synonyms:**

Protein PD-1, hPD-1, PDCD1

**Note:**

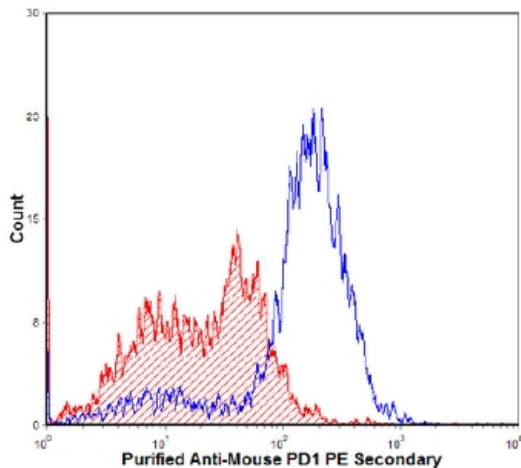
**TEST RESULTS** (Figure 1.)

Tissue Distribution by Flow Cytometry Analysis:

Mouse Strain: Balb/c

Antibody Concentration Used: 2.0 µg/10e6 cells.

Isotypic Control (shaded): Purified Hamster IgG.

**Product images:**

Cell Source: Con A/IL2 activated T-Blasts from Balb/c spleen. Percentage of cells stained above control: 36.6%