

## Product datasheet for **AM31868PU-N**

### **CREG1 Mouse Monoclonal Antibody [Clone ID: 1B7]**

#### **Product data:**

Product Type:	Primary Antibodies
Clone Name:	1B7
Applications:	ELISA, IHC, WB
Recommended Dilution:	<b>ELISA.</b> <b>Immunohistochemistry on Paraffin Sections:</b> 10 µg/ml. <b>Western Blot:</b> 1/500 - 1/1000.
Reactivity:	Human
Host:	Mouse
Isotype:	IgG1
Clonality:	Monoclonal
Immunogen:	CREG1 antibody was raised against CREG1 (NP_003842, 121 a.a. ~ 221 a.a) partial recombinant protein with GST tag.
Specificity:	Recognizes CREG1/CREG
Formulation:	PBS, pH 7.2 State: Purified State: Liquid purified Ig fraction
Concentration:	lot specific
Purification:	Protein A Chromatography
Conjugation:	Unconjugated
Storage:	Upon receipt, store undiluted (in aliquots) at -20°C. Avoid repeated freezing and thawing.
Stability:	Shelf life: one year from despatch.
Gene Name:	cellular repressor of E1A stimulated genes 1
Database Link:	<a href="#">Entrez Gene 8804 Human</a> <a href="#">O75629</a>



[View online »](#)

**Background:**

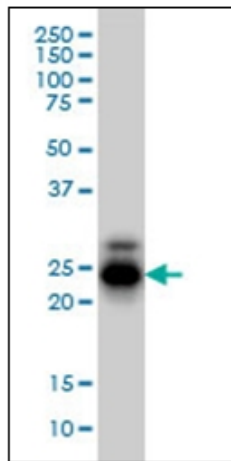
The adenovirus E1A protein both activates and represses gene expression to promote cellular proliferation and inhibit differentiation. CREG1 antagonizes transcriptional activation and cellular transformation by E1A. This protein shares limited sequence similarity with E1A and binds both the general transcription factor TBP and the tumor suppressor pRb in vitro. The adenovirus E1A protein both activates and represses gene expression to promote cellular proliferation and inhibit differentiation. The protein encoded by this gene antagonizes transcriptional activation and cellular transformation by E1A. This protein shares limited sequence similarity with E1A and binds both the general transcription factor TBP and the tumor suppressor pRb in vitro. This gene may contribute to the transcriptional control of cell growth and differentiation.

**Synonyms:**

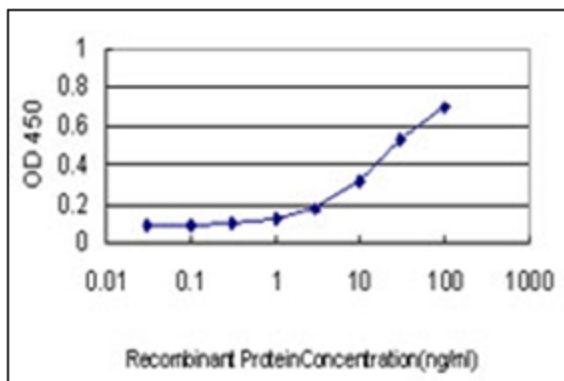
CREG

**Protein Families:**

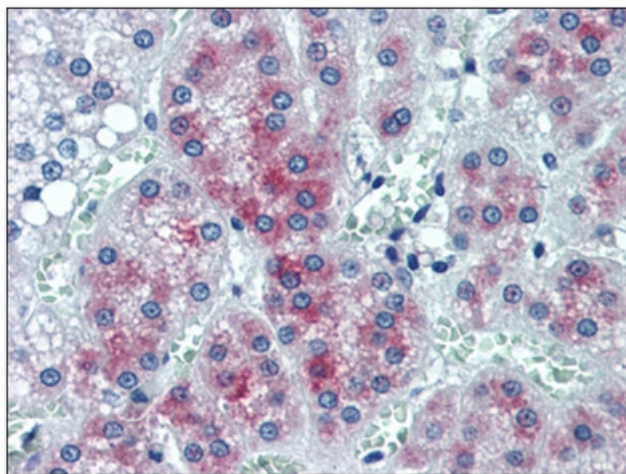
Secreted Protein, Transcription Factors, Transmembrane

**Product images:**


Western Blot analysis of CREG1 expression in HL-60 using CREG1 antibody.



Detection limit for recombinant GST tagged CREG1 is approximately 0.3 ng/ml as a capture antibody.



Human Adrenal: Formalin-Fixed, Paraffin-Embedded (FFPE)