

Product datasheet for **AM31863PU-N**

TCR DO-11.10 Mouse Monoclonal Antibody [Clone ID: KJ1-26]

Product data:

Product Type:	Primary Antibodies
Clone Name:	KJ1-26
Applications:	FC
Recommended Dilution:	Flow Cytometry (See Protocols). This clone has also been reported to work in Immunoprecipitation, ELISA and Inhibition Assay .
Reactivity:	Mouse
Host:	Mouse
Isotype:	IgG2a
Clonality:	Monoclonal
Immunogen:	T cell hybridoma, D011.10. Donor: Mouse ascites fluid.
Specificity:	This Monoclonal Antibody binds the T-cell receptor (TCR) expressed on DO11.10 and DO11.10.24 murine T cell hybridomas, but not on any other T cell hybridomas tested. (1) The TCR expressed on DO11.10 recognizes an ovalbumin peptide in the context of I-Ad major histocompatibility molecules. (1,2) The use of DO11.10 and Clone KJ1-26 have proven to be instrumental in describing many of the intricate details of T cell immunity. (3-6) The DO11.10 T cell hybridoma is available from the laboratories of Drs. Kappler and Marrack. (2,7)
Formulation:	PBS containing 0.02% Sodium Azide as preservative. State: Purified State: Liquid purified IgG fraction.
Concentration:	lot specific
Purification:	Protein G Affinity Chromatography.
Conjugation:	Unconjugated
Storage:	Store the antibody undiluted at 2-8°C for one month or (in aliquots) at -20°C for longer. Avoid repeated freezing and thawing.
Stability:	Shelf life: one year from despatch.



[View online »](#)

Synonyms: DO-11.10 T cell Receptor

Note: Protocol: **Test Results** (See Figure 1.)

Tissue Distribution by Flow Cytometry Analysis:

Mouse Strain: BALB/c-[Tg] D011.10 TCR-[KO] RAG2.

Cell Concentration : 1x10⁶ cells per tests.

Antibody Concentration Used: 0.5 µg/10⁶ cells.

Isotypic Control (Shaded): Purified Mouse IgG2a.

Product images:

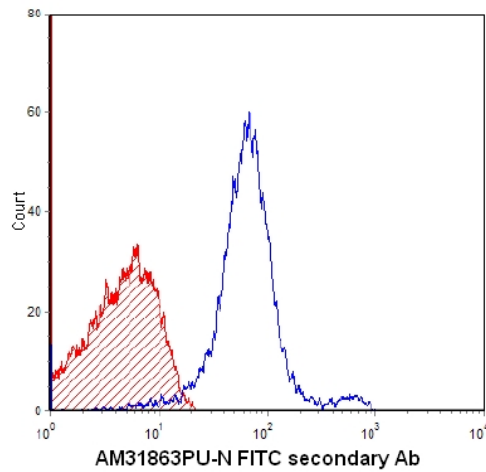


Figure 1. Cell Source: Balb/c TCR Positive Thymocytes. Percentage of cells stained above control: 96.7%