

Product datasheet for **AM31861RP-N**

Cd27 Hamster Monoclonal Antibody [Clone ID: LG.3A10]

Product data:

Product Type:	Primary Antibodies
Clone Name:	LG.3A10
Applications:	FC, FN, IHC
Recommended Dilution:	Flow Cytometry. Functional studies (stimulating). Immunohistochemistry on Frozen Sections. Tissue Distribution by Flow Cytometry Analysis: Mouse Strain: BALB/c Cell Concentration : 1x10 ⁶ cells per tests Antibody Concentration Used: 0.5 µg/10 ⁶ cells Isotypic Control: PE Hamster IgG
Reactivity:	Mouse
Host:	Hamster
Isotype:	IgG1
Clonality:	Monoclonal
Immunogen:	MCD27 tag expressing clones AR0524 and AR0530 <u>Donor:</u> Armenian hamster spleen <u>Fusion Partner:</u> SP2/0 Murine Myeloma Partner
Specificity:	This Monoclonal Antibody is specific for the Mouse CD27 receptor.
Formulation:	PBS Label: PE State: Liquid purified IgG fraction Stabilizer: EIA grade BSA as a stabilizing protein to bring total protein concentration to 4-5 mg/ml Preservative: 0.02% Sodium Azide Label: R - Phycoerythrin
Concentration:	lot specific
Conjugation:	PE



[View online »](#)

Storage: Store the antibody undiluted at 2-8°C.
DO NOT FREEZE!

Stability: Shelf life: one year from despatch.

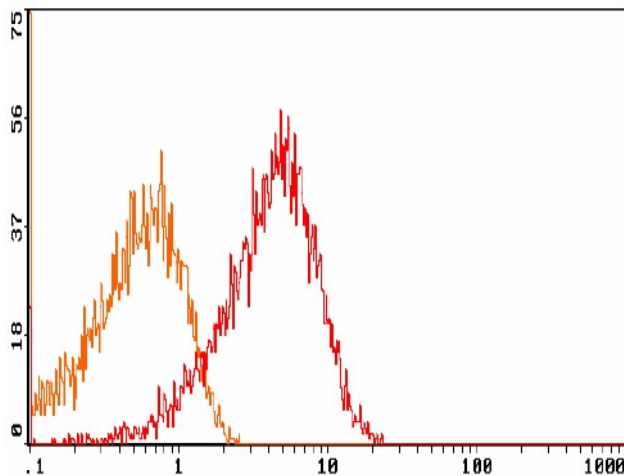
Gene Name: CD27 antigen

Database Link: [Entrez Gene 21940 Mouse P41272](#)

Background: CD27 is part of the Tumor Necrosis Factor (TNF) family of receptors and is lymphocyte specific. Murine CD27 is expressed on the great majority of both $\alpha\beta$ and $\gamma\delta$ T lymphocytes, on a small population of peripheral B cells and on a very small subset of B220+ cells in the bone marrow. Murine CD27 is found on all thymocytes except a subset of CD4-CD8-precursors. There are two known basic functions of CD27 signaling. First, the binding of CD27 to CD70, a protein which is also expressed in T and B cells, provides costimulatory signals in lymphocyte proliferation and immunoglobulin production. Second, the association of CD27 with intracellular Siva, a proapoptotic protein, results in the induction of apoptotic events.

Synonyms: TNFRSF7, CD27L receptor, T14

Product images:



Flow Cytometry: Balb/c thymocytes labelled with including isotypic control. Percentage of cells stained above control: 90%