

Product datasheet for **AM31861PU-N**

Cd27 Hamster Monoclonal Antibody [Clone ID: LG.3A10]

Product data:

Product Type:	Primary Antibodies
Clone Name:	LG.3A10
Applications:	FC, FN, IHC
Recommended Dilution:	ELISA: In combination with LG.8A6, it is possible to develop a double determinant ELISA to detect soluble Mouse CD27. Flow Cytometry: Functional Studies (stimulating). Immunohistochemistry on Frozen Sections. Immunohistochemistry on Paraffin Sections: This clone (LG.3A10) has been reported to work on Paraffin tissue sections.
Reactivity:	Mouse
Host:	Hamster
Isotype:	IgG1
Clonality:	Monoclonal
Immunogen:	MCD27 tag expressing clones AR0524 and AR0530 from Armenian Hamster spleen. Fusion Partner: SP2/0 Murine Myeloma Partner.
Specificity:	Recognizes Mouse CD27 receptor.
Formulation:	PBS containing 0.02% Sodium Azide as preservative State: Purified State: Liquid purified IgG fraction from Ascites
Concentration:	lot specific
Purification:	Protein G Chromatography
Conjugation:	Unconjugated
Storage:	Store undiluted at 2-8°C for one month or (in aliquots) at -20°C for longer. Avoid repeated freezing and thawing.
Stability:	Shelf life: one year from despatch.
Gene Name:	CD27 antigen



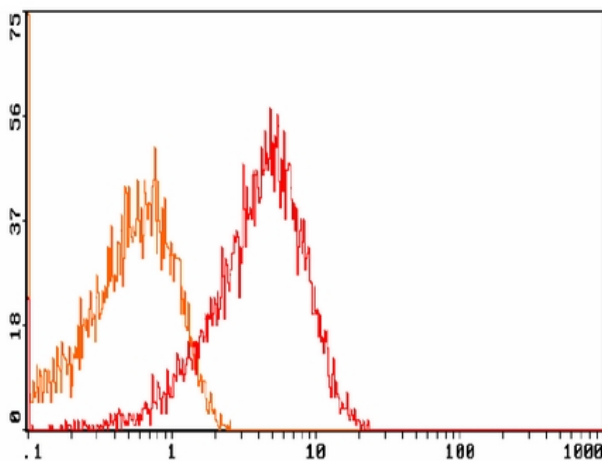
[View online »](#)

Database Link: [Entrez Gene 21940 Mouse P41272](#)

Background: CD27 is part of the Tumor Necrosis Factor (TNF) family of receptors and is lymphocyte specific. Murine CD27 is expressed on the great majority of both T lymphocytes, on a small population of peripheral B cells and on a very small subset of B220+ cells in the bone marrow. Murine CD27 is found on all thymocytes except a subset of CD4-CD8- precursors. There are two known basic functions of CD27 signaling. First, the binding of CD27 to CD70, a protein which is also expressed in T and B cells, provides costimulatory signals in lymphocyte proliferation and immunoglobulin production. Second, the association of CD27 with intracellular Siva, a proapoptotic protein, results in the induction of apoptotic events.

Synonyms: TNFRSF7, CD27L receptor, T14

Product images:



Flow Cytometry: Balb/c Thymocytes labelled with [AM31861RP-N] including isotypic control.
Percentage of cells stained above control: 90%