

Product datasheet for **AM31861FC-N**

Cd27 Hamster Monoclonal Antibody [Clone ID: LG.3A10]

Product data:

Product Type:	Primary Antibodies
Clone Name:	LG.3A10
Applications:	FC, FN, IHC
Recommended Dilution:	Flow Cytometry. Functional Studies (stimulating). Immunohistochemistry on Frozen Sections. Immunohistochemistry on Paraffin Sections.
Reactivity:	Mouse
Host:	Hamster
Isotype:	IgG1
Clonality:	Monoclonal
Immunogen:	MCD27 tag expressing clones AR0524 and AR0530 from Armenian Hamster spleen.
Specificity:	Recognizes Mouse CD27 receptor.
Formulation:	PBS Label: FITC State: Liquid purified IgG fraction Stabilizer: EIA grade BSA to bring total protein concentration to 4-5 mg/ml Preservative: 0.02% Sodium Azide
Concentration:	lot specific
Purification:	Protein G Chromatography
Conjugation:	FITC
Storage:	Store undiluted at 2-8°C for one month or (in aliquots) at -20°C for longer. This product is photosensitive and should be protected from light. Avoid repeated freezing and thawing.
Stability:	Shelf life: one year from despatch.
Gene Name:	CD27 antigen
Database Link:	Entrez Gene 21940 Mouse P41272



[View online »](#)

Background:

CD27 is part of the Tumor Necrosis Factor (TNF) family of receptors and is lymphocyte specific. Murine CD27 is expressed on the great majority of both $\alpha\beta$ and $\gamma\delta$ T lymphocytes, on a small population of peripheral B cells and on a very small subset of B220+ cells in the bone marrow. Murine CD27 is found on all thymocytes except a subset of CD4-CD8- precursors. There are two known basic functions of CD27 signaling. First, the binding of CD27 to CD70, a protein which is also expressed in T and B cells, provides costimulatory signals in lymphocyte proliferation and immunoglobulin production. Second, the association of CD27 with intracellular Siva, a proapoptotic protein, results in the induction of apoptotic events.

Synonyms:

TNFRSF7, CD27L receptor, T14

Note:
Tests Results:

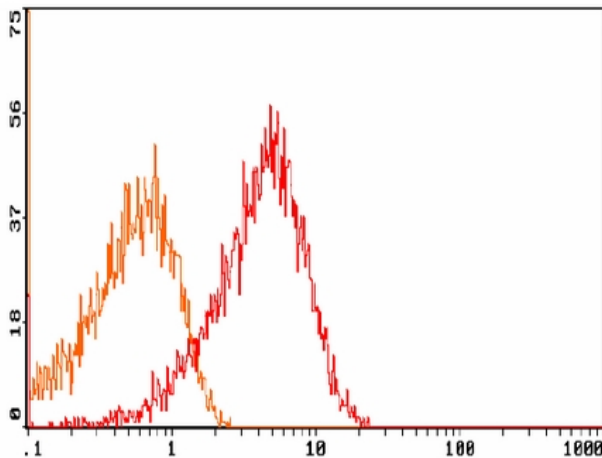
Tissue Distribution by Flow Cytometry Analysis:

Mouse Strain: BALB/c

Cell Concentration : 1x10e6 cells per tests

Antibody Concentration Used: 0.5 μ g/10e6 cells

Isotypic Control: PE Hamster IgG

Product images:


Flow Cytometry: Balb/c Thymocytes labelled with [AM31861RP-N] including isotypic control.
Percentage of cells stained above control: 90%