

Product datasheet for **AM31858PU-N**

Ly-76 / TER-119 Rat Monoclonal Antibody [Clone ID: TER-119]

Product data:

Product Type: Primary Antibodies

Clone Name: TER-119

Applications: FC, IHC, IP, WB

Recommended Dilution: **Flow Cytometry.**

This Antibody has been reported to work in **Western Blot, Immunoprecipitation** and **Immunohistochemistry on Frozen and Paraffin Sections.**

Reactivity: Mouse

Host: Rat

Isotype: IgG2b

Clonality: Monoclonal

Immunogen: Day 14 BALB/c fetal liver cells from Wistar Rat spleen.

Specificity: Mouse Erythroid Cells (Ly-76).

This anti-Mouse Erythroid cell (Ly-76) Monoclonal Antibody is selectively reactive with both fetal and adult erythroid cells.

This monoclonal antibody (clone: TER119) is specific for cells at stages from early proerythroblast to mature erythrocytes.

TER119 is reported to react with 20-25% of bone marrow cells and 2-3% of spleen cells but not with thymocytes or lymph node cells. In fetal haematopoietic tissues, 30-40% of day 10 yolk sac cells, 80-90% of day 14 fetal liver cells and 40-50% of newborn liver cells were reactive with AM31858PU-N. TER119+ cells in adult bone marrow expressed significant levels of CD45 but not myeloid (Mac-1, Gr-1) or B cell (B220) markers.

This Monoclonal Antibody immunoprecipitated protein bands with molecular weights of 110 kDa, 60 kDa, 52 kDa and 32 kDa from erythrocyte membrane whereas only a 52 kDa band was detected by TER119 in Western Blot analysis. It has been determined that the TER119 antigen is a molecule associated with cell-surface glycoporphin A but not with glycoporphin A itself. Also the antigen is only expressed on normal erythroid cells but not on erythroleukaemia cells.

Formulation: PBS containing 0.02% Sodium Azide as preservative

State: Purified

State: Liquid purified Ig fraction



[View online »](#)

Concentration: lot specific

Purification: Protein G Affinity Chromatography

Conjugation: Unconjugated

Storage: Store undiluted at 2-8°C for one month or (in aliquots) at -20°C for longer. Avoid repeated freezing and thawing.

Stability: Shelf life: one year from despatch.

Synonyms: Lymphocyte antigen 76, TER119

Note:

Test Results:

Tissue Distribution by Flow Cytometry Analysis:

Mouse Strain: ATH

Cell Concentration: 1 x 10⁶ cells per test

Antibody Concentration Used: 0.5 µg/10⁶ cells

Secondary Antibody Used: Goat Anti-Rat FITC

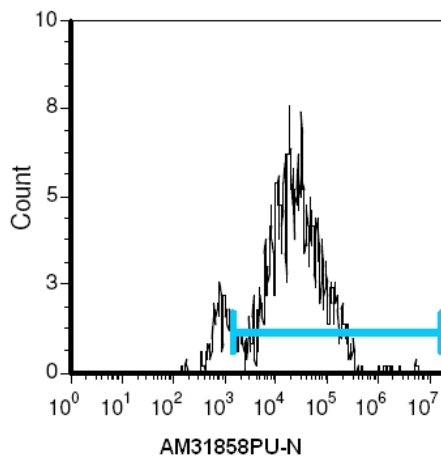
Cell Source (Percentage of cells stained above control):

Whole Bone Marrow (17.4%)

Whole Blood (86.5%)

*Blood was collected 1:1 in Alsever's and 0.1M Disodium EDTA was added 1:1 and incubated 10 minutes at room temperature followed by 3 washes with PBS.

Product images:



Cell Source: Whole Blood