

Product datasheet for **AM31839PU-N**

S100A9 Mouse Monoclonal Antibody [Clone ID: CF-557]

Product data:

Product Type:	Primary Antibodies
Clone Name:	CF-557
Applications:	FC, IF, IHC, WB
Recommended Dilution:	Flow Cytometry: 2.0 µg/10 ⁶ cells. Positive Control: Human peripheral blood leukocytes. Immunofluorescence (Reported). Western blot (Reported). Immunohistochemistry (Reported).
Reactivity:	Human
Host:	Mouse
Isotype:	IgG1
Clonality:	Monoclonal
Immunogen:	Purified granulocyte antigen of Human origin.
Specificity:	This antibody Binds to Human Calgranulin B (S100A9). Other species not tested.
Formulation:	PBS State: Purified State: Liquid purified IgG fraction from Ascitic fluid Preservative: 0.02% Sodium Azide
Concentration:	lot specific
Purification:	Protein G Chromatography
Conjugation:	Unconjugated
Storage:	Store undiluted at 2-8°C for one month or (in aliquots) at -20°C for longer. Avoid repeated freezing and thawing.
Stability:	Shelf life: one year from despatch.
Gene Name:	S100 calcium binding protein A9
Database Link:	Entrez Gene 6280 Human P06702



[View online »](#)

Background:

Calgranulin B, also known as MRP-14 and S100A9 is a member of the S100 family of proteins containing 2 EF hand (alpha helix, turn, alpha helix structure) calcium binding motifs. S100 proteins are localized in the cytoplasm and /or nucleus of a wide range of cells and are involved in the regulation of a number of cellular processes such as cell cycle progression and differentiation.

MRP-14 (S100A9) forms a heterodimeric complex with MRP-8 (S100A8) in the cytosol of monocyte and neutrophil cell types circulating in peripheral blood. Calgranulin B is found in elevated levels in the serum of cystic fibrosis cases and is also expressed in the skin of patients with psoriasis, eczematous dermatitis and squamous cell carcinoma. Calgranulin B is also expressed on macrophages in acute inflamed tissues (peridontitis, contact excema).

Synonyms:

S100-A9, CAGB, MRP-14

Note:

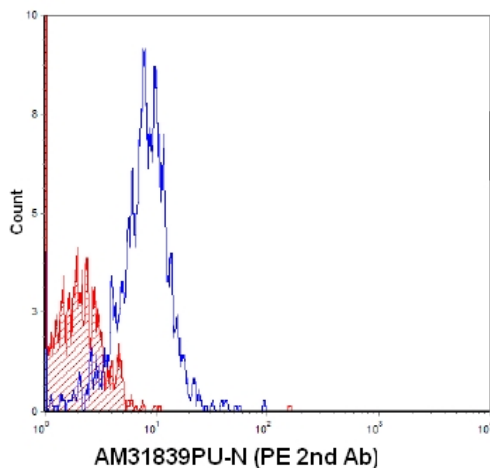
Protocol: **Tests Results**

Tissue Distribution by Flow Cytometry Analysis:

Cell Concentration: 1×10^6 cells per tests.

Antibody Concentration Used: $2.0 \mu\text{g}/10^6$ cells.

Isotypic Control (shaded): Purified Mouse IgG1.

Product images:

Cell Source: Human Peripheral Blood Leukocytes
labeled with and PE Secondary Antibody.
Percentage of cells stained above control: 74.7%