

## Product datasheet for **AM31838PU-N**

### MRP8 (S100A8) Mouse Monoclonal Antibody [Clone ID: CF-145]

#### Product data:

Product Type:	Primary Antibodies
Clone Name:	CF-145
Applications:	FC, IF, IHC, WB
Recommended Dilution:	<b>Flow Cytometry.</b> <b>Immunofluorescence.</b> <b>Western blot.</b> <b>Immunohistochemistry on Paraffin Sections:</b> 2.5 µg/ml. Heat induced antigen retrieval in pH 6.0 citrate buffer is recommended.
Reactivity:	Human
Host:	Mouse
Isotype:	IgG2b
Clonality:	Monoclonal
Immunogen:	Purified granulocyte antigen of Human origin.
Specificity:	This antibody detects Calgranulin A (S100A8).
Formulation:	PBS containing 0.02% Sodium Azide as preservative. State: Purified State: Liquid purified IgG fraction.
Concentration:	lot specific
Purification:	Protein G Chromatography of Ascitic fluid.
Conjugation:	Unconjugated
Storage:	Store the antibody undiluted at 2-8°C for one month or (in aliquots) at -20°C for longer. Avoid repeated freezing and thawing.
Stability:	Shelf life: one year from despatch.
Gene Name:	S100 calcium binding protein A8
Database Link:	<a href="#">Entrez Gene 6279 Human P05109</a>



[View online »](#)

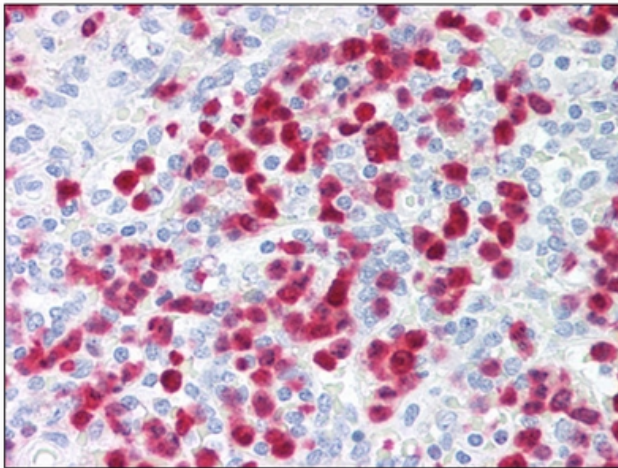
**Background:**

Calgranulin A, also known as MRP-8 and S100A8 is a member of the S100 family of proteins containing 2 EF hand (alpha helix, turn, alpha helix structure) calcium binding motifs. S100 proteins are localized in the cytoplasm and /or nucleus of a wide range of cells and are involved in the regulation of a number of cellular processes such as cell cycle progression and differentiation.

MRP-8 (S100A8) forms a heterodimeric complex with Calgranulin B, (MRP-14, S100A9) in the cytosol of monocyte and neutrophil cell types circulating in peripheral blood. Calgranulin A is found in elevated levels in the serum of cystic fibrosis cases and is also expressed in the skin of patients with psoriasis, eczematous dermatitis and squamous cell carcinoma.

**Synonyms:**

S100-A8, CAGA, MRP-8, CFAG

**Product images:**

S100A8 antibody staining of Formalin-Fixed, Paraffin-Embedded Human Spleen, neutrophils at 2.5 ug/ml followed by biotinylated anti-mouse IgG secondary antibody, alkaline phosphatase-streptavidin and chromogen.