

## Product datasheet for **AM31838FC-N**

### MRP8 (S100A8) Mouse Monoclonal Antibody [Clone ID: CF-145]

#### Product data:

Product Type:	Primary Antibodies
Clone Name:	CF-145
Applications:	FC, IF, IHC, WB
Recommended Dilution:	<b>Flow Cytometry:</b> 0.5 µg/1x10 <sup>6</sup> cells. <b>Immunofluorescence.</b> <b>Western blot.</b> <b>Immunohistochemistry on Paraffin Sections:</b> 1/50. Heat induced antigen retrieval in pH 6.0 citrate buffer is recommended.
Reactivity:	Human
Host:	Mouse
Isotype:	IgG2b
Clonality:	Monoclonal
Immunogen:	Purified granulocyte antigen of Human origin. Donor: Human leukocytes. Fusion Partner: NSO Mouse Myeloma Partner.
Specificity:	This antibody detects Calgranulin A (S100A8).
Formulation:	PBS Label: FITC State: Liquid purified IgG fraction of Ascitic fluid Stabilizer: EIA grade BSA to bring total protein concentration to 4-5 mg/ml Preservative: 0.02% Sodium Azide
Concentration:	lot specific
Purification:	Protein G Chromatography
Conjugation:	FITC
Storage:	Store undiluted at 2-8°C for one month or (in aliquots) at -20°C for longer. This product is photosensitive and should be protected from light. Avoid repeated freezing and thawing.
Stability:	Shelf life: one year from despatch.



[View online »](#)

**Gene Name:** S100 calcium binding protein A8

**Database Link:** [Entrez Gene 6279 Human P05109](#)

**Background:** Calgranulin A, also known as MRP-8 and S100A8 is a member of the S100 family of proteins containing 2 EF hand (alpha helix, turn, alpha helix structure) calcium binding motifs. S100 proteins are localized in the cytoplasm and /or nucleus of a wide range of cells and are involved in the regulation of a number of cellular processes such as cell cycle progression and differentiation. MRP-8 (S100A8) forms a heterodimeric complex with Calgranulin B, (MRP-14, S100A9) in the cytosol of monocyte and neutrophil cell types circulating in peripheral blood. Calgranulin A is found in elevated levels in the serum of cystic fibrosis cases and is also expressed in the skin of patients with psoriasis, eczematous dermatitis and squamous cell carcinoma.

**Synonyms:** S100-A8, CAGA, MRP-8, CFAG

**Note:** Protocol: **Tests Results**

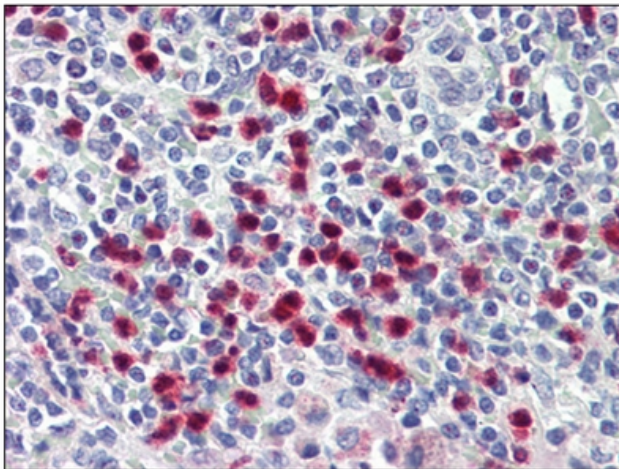
**Tissue Distribution by Flow Cytometry Analysis:**

Cell Concentration : 1x10e6 cells per tests.

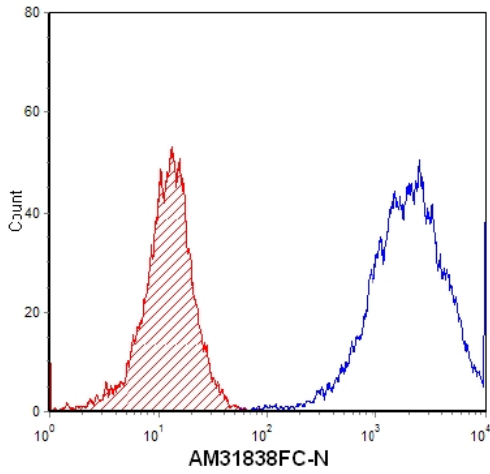
Antibody Concentration Used: 0.5 µg/10e6 cells.

Isotypic Control (shaded): FITC Mouse IgG2b.

**Product images:**



S100A8 antibody staining of Formalin-Fixed, Paraffin-Embedded Human Spleen at 1/50 followed by biotinylated anti-mouse IgG secondary antibody, alkaline phosphatase-streptavidin and chromogen.



Cell Source: Human Peripheral Blood Leukocytes  
labeled with. Percentage of cells stained above  
control: 99.9%