

## Product datasheet for **AM31831PU-N**

### Mitochondria Mouse Monoclonal Antibody [Clone ID: 113-1]

#### Product data:

Product Type: Primary Antibodies

Clone Name: 113-1

Applications: IF, IHC, WB

Recommended Dilution: **Western Blot:** 1/1,000.

**Immunofluorescence:** 1/800.

**Immunohistochemistry:** 1/800.

The antibody works on Acetone fixed and 2% paraformaldehyde fixed cells.

The antibody also works for Immunohistochemistry on 2% paraformaldehyde fixed (5-10 minutes) Cryostat sections.

Successful use in **Immunohistochemistry on Formalin-Fixed, Paraffin-Embedded** was reported by some researchers.

Reactivity: Human

Host: Mouse

Isotype: IgG1

Clonality: Monoclonal

Immunogen: Human cell homogenate

Specificity: Specific for Human Mitochondria in all cell types.

This antibody is an excellent marker for Human cells in xenographic model research.

It reacts specifically with Human cells, including neurons and embryonic stem cells.

It does not react with Mouse or Rat mitochondria.

Formulation: State: Ig Fraction

State: Liquid Total IgG fraction

Purification: Immunoglobulin Fractionation

Conjugation: Unconjugated

Storage: Store undiluted at 2-8°C for one month or (in aliquots) at -20°C for longer.

Avoid repeated freezing and thawing.

Stability: Shelf life: one year from despatch.

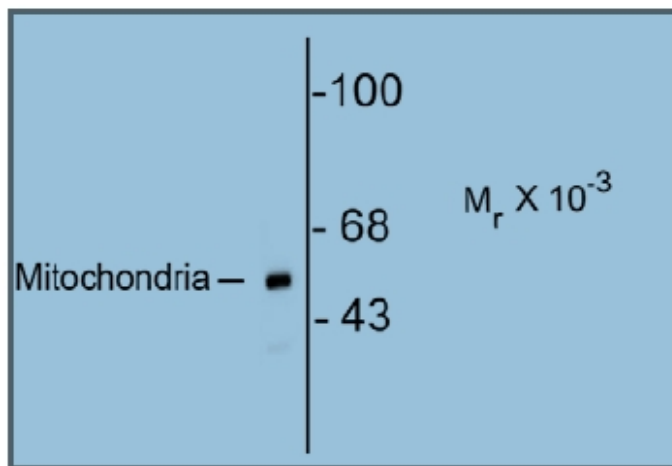


[View online »](#)

**Background:** Mitochondria are most commonly known as the power plants of the cell as they produce ATP, but they are also involved in many other important cellular processes such as cell signaling, growth and differentiation (McBride et al., 2006). In addition, mitochondria have been shown to play a role in apoptosis (Green 1998).

**Synonyms:** Mitochondrial Marker

**Product images:**



Western blot of HeLa lysate showing specific immunolabeling of the ~60k mitochondrial protein.