

Product datasheet for **AM31816PU-N**

Neuroserpin (SERPINI1) Mouse Monoclonal Antibody [Clone ID: 1D10]

Product data:

Product Type:	Primary Antibodies
Clone Name:	1D10
Applications:	ELISA, IHC, WB
Recommended Dilution:	ELISA. Immunohistochemistry on Paraffin Sections: 5 µg/ml. Western Blot: 1/500 - 1/1000.
Reactivity:	Human
Host:	Mouse
Isotype:	IgG1
Clonality:	Monoclonal
Immunogen:	SERPINI1 antibody was raised against sSERPINI1 (AAH18043, 17 a.a. ~ 411 a.a) full length recombinant protein with GST tag. MW of the GST tag alone is 26 KDa.
Specificity:	This antibody reacts to SERPINI1 / Neuroserpin.
Formulation:	PBS, pH 7.2 State: Purified State: Liquid purified Ig fraction
Concentration:	lot specific
Purification:	Affinity chromatography on Protein A
Conjugation:	Unconjugated
Storage:	Store the antibody at -20°C. Avoid repeated freezing and thawing.
Stability:	Shelf life: one year from despatch.
Gene Name:	serpin family I member 1
Database Link:	Entrez Gene 5274 Human Q99574



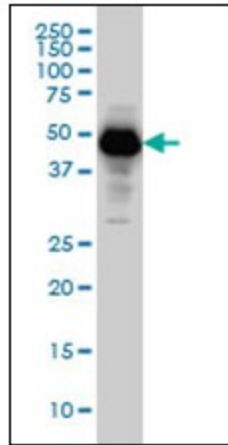
[View online »](#)

Background: Serine protease inhibitor that inhibits plasminogen activators and plasmin but not thrombin. May be involved in the formation or reorganization of synaptic connections as well as for synaptic plasticity in the adult nervous system. May protect neurons from cell damage by tissue-type plasminogen activator.

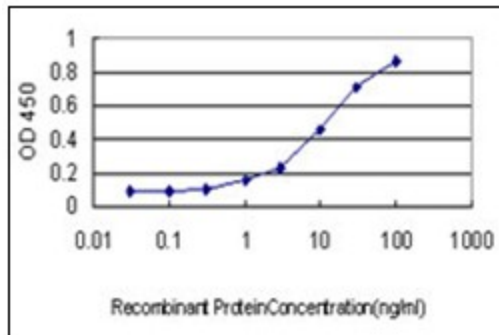
Synonyms: Serpin I1, PI12, PI-12

Protein Families: Druggable Genome, Secreted Protein

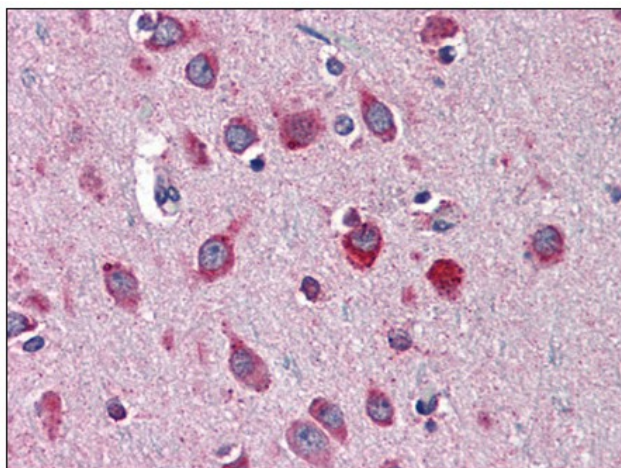
Product images:



SERPINI1 monoclonal antibody, Western Blot analysis of SERPINI1 expression in HeLa.



Detection limit for recombinant GST tagged SERPINI1 is approximately 0.3ng/ml as a capture antibody.



Human Brain, Cortex: Formalin-Fixed, Paraffin-Embedded (FFPE)