

Product datasheet for **AM31813PU-N**

PAK1 Mouse Monoclonal Antibody [Clone ID: 1E11]

Product data:

Product Type:	Primary Antibodies
Clone Name:	1E11
Applications:	ELISA, IHC, WB
Recommended Dilution:	ELISA. Immunohistochemistry on Paraffin Sections: 5 µg/ml. Western Blot: 1/500 - 1/1000.
Reactivity:	Human
Host:	Mouse
Isotype:	IgG1
Clonality:	Monoclonal
Immunogen:	PAK1 (NP_002567, 191 a.a. ~ 280 a.a) partial recombinant protein with GST tag. MW of the GST tag alone is 26 KDa.
Specificity:	This antibody recognizes Human PAK1. Other species not tested.
Formulation:	PBS, pH 7.2 State: Purified State: Liquid purified Ig fraction
Concentration:	lot specific
Purification:	Affinity Chromatography on Protein A
Conjugation:	Unconjugated
Storage:	Upon receipt, store undiluted (in aliquots) at -20°C. Avoid repeated freezing and thawing.
Stability:	Shelf life: one year from despatch.
Gene Name:	p21 (RAC1) activated kinase 1
Database Link:	Entrez Gene 5058 Human Q13153



[View online »](#)

Background:

PAK1, a PAK (STE20) type protein kinase, is an effector for the small GTP binding proteins Cdc42 and Rac in the regulation of cell motility and morphology. The activated protein has been shown to act on a variety of targets, including actin-binding protein filamin A, myosin light chain kinase, histone H3 and the stress-activated protein kinase JNK1. The PAK1 gene has been mapped to chromosome 11q13, a region of amplification in a subset of estrogen receptor positive breast carcinomas prone to metastasis.

Synonyms:

PAK 1, PAK-1, Alpha-PAK, PAK alpha, p21-activated kinase 1, p65-PAK

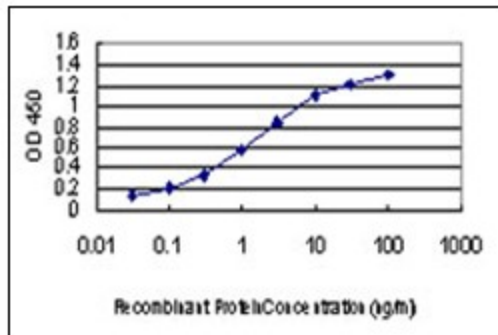
Protein Families:

Druggable Genome, Protein Kinase, Stem cell - Pluripotency

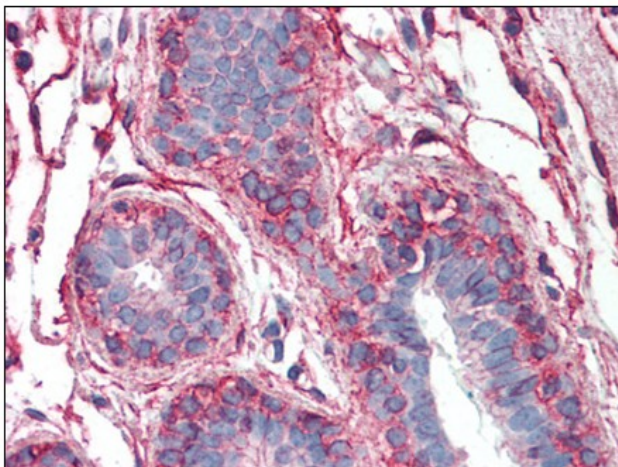
Protein Pathways:

Axon guidance, Chemokine signaling pathway, Epithelial cell signaling in Helicobacter pylori infection, ErbB signaling pathway, Fc gamma R-mediated phagocytosis, Focal adhesion, MAPK signaling pathway, Natural killer cell mediated cytotoxicity, Regulation of actin cytoskeleton, Renal cell carcinoma, T cell receptor signaling pathway

Product images:



Detection limit for recombinant GST tagged PAK1 is approximately 0.03ng/ml as a capture antibody.



Human Breast: Formalin-Fixed, Paraffin-Embedded (FFPE)