

Product datasheet for **AM31812PU-N**

MAG Mouse Monoclonal Antibody [Clone ID: 3C7]

Product data:

Product Type:	Primary Antibodies
Clone Name:	3C7
Applications:	ELISA, IHC, WB
Recommended Dilution:	ELISA. Immunohistochemistry on Paraffin Sections: 2.5 µg/ml. Western Blot: 1/500 - 1/1000.
Reactivity:	Human
Host:	Mouse
Isotype:	IgG1
Clonality:	Monoclonal
Immunogen:	MAG antibody was raised against MAG (NP_002352, 119 a.a. ~ 209 a.a) partial recombinant protein with GST tag. MW of the GST tag alone is 26 KDa.
Specificity:	This antibody recognizes Human MAG. Other species not tested.
Formulation:	PBS, pH 7.4 State: Purified State: Liquid purified Ig fraction
Concentration:	lot specific
Purification:	Affinity Chromatography on Protein A
Conjugation:	Unconjugated
Storage:	Upon receipt, store undiluted (in aliquots) at -20°C. Avoid repeated freezing and thawing.
Stability:	Shelf life: one year from despatch.
Gene Name:	myelin associated glycoprotein
Database Link:	Entrez Gene 4099 Human P20916



[View online »](#)

Background:

Myelin-associated glycoprotein (MAG), a member of the immunoglobulin superfamily, is a membrane glycoprotein of 100 kDa, and is thought to be involved in the process of myelination. Axonal regeneration in the adult central nervous system (CNS) is limited by two proteins in myelin, Nogo and MAG. MAG has been implicated in the inhibition of nerve regeneration in the CNS.

Synonyms:

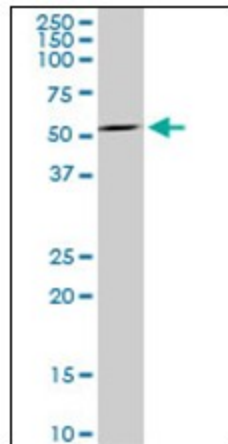
MAG, GMA, Siglec-4a

Protein Families:

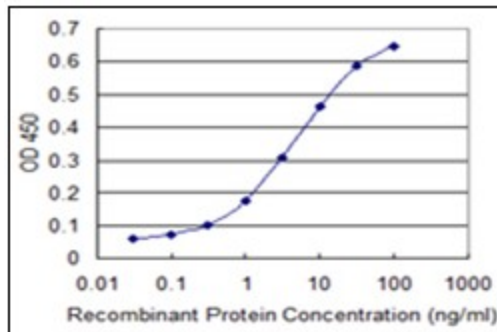
Druggable Genome, Transmembrane

Protein Pathways:

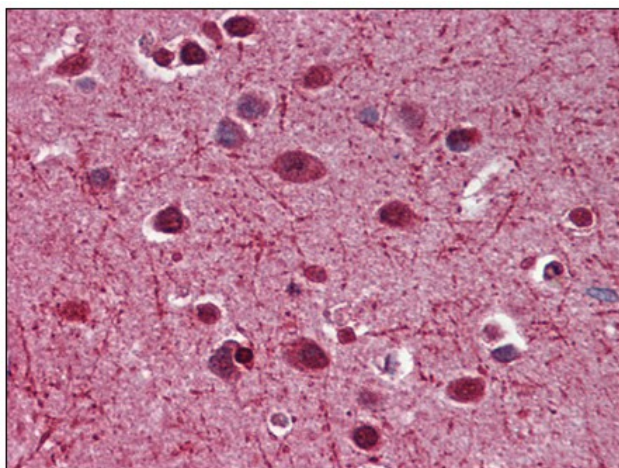
Cell adhesion molecules (CAMs)

Product images:


Western Blot analysis of MAG expression in Jurkat cell lysate.



Detection limit for recombinant GST tagged MAG is 0.1 ng/ml as a capture antibody.



Human Brain, Cortex: Formalin-Fixed, Paraffin-Embedded (FFPE)