

Product datasheet for **AM31811PU-N**

DNA Ligase I (LIG1) Mouse Monoclonal Antibody [Clone ID: 10G12]

Product data:

Product Type:	Primary Antibodies
Clone Name:	10G12
Applications:	ELISA, IHC, WB
Recommended Dilution:	ELISA. Immunohistochemistry on Paraffin Sections: 5 µg/ml. Western Blot: 1/500 - 1/1000.
Reactivity:	Human
Host:	Mouse
Isotype:	IgG2a
Clonality:	Monoclonal
Immunogen:	LIG1 antibody was raised against IIG1 (NP_000225, 810 a.a. ~ 920 a.a) partial recombinant protein with GST tag. MW of the GST tag alone is 26 KDa.
Specificity:	This antibody reacts to LIG1.
Formulation:	PBS, pH 7.2 State: Purified State: Liquid purified Ig fraction
Concentration:	lot specific
Purification:	Affinity chromatography on Protein A
Conjugation:	Unconjugated
Storage:	Store the antibody at -20°C to -80°C. Avoid repeated freezing and thawing.
Stability:	Shelf life: one year from despatch.
Gene Name:	DNA ligase 1
Database Link:	Entrez Gene 3978 Human P18858
Background:	LIG1 encodes DNA ligase I, with functions in DNA replication and the base excision repair process. Mutations in LIG1 that lead to DNA ligase I deficiency result in immunodeficiency and increased sensitivity to DNA-damaging agents.



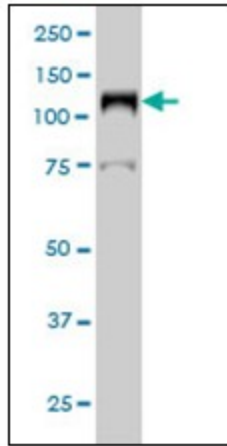
[View online »](#)

Synonyms: LIG1, LIG-1, DNA ligase 1, EC=6.5.1.1, DNA ligase I

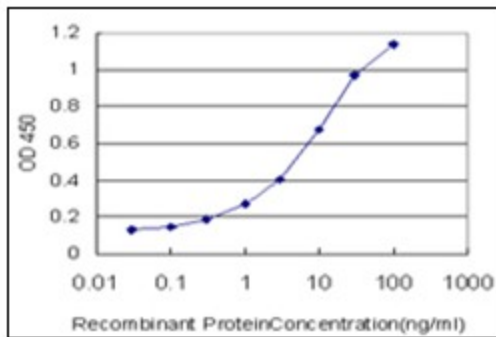
Protein Families: Druggable Genome

Protein Pathways: Base excision repair, DNA replication, Mismatch repair, Nucleotide excision repair

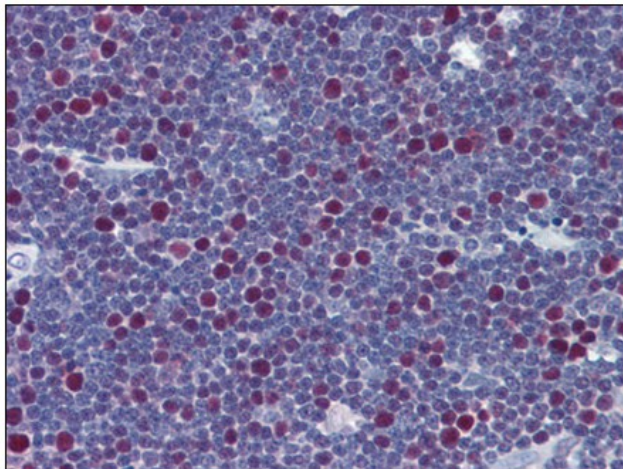
Product images:



Western Blot analysis of LIG1 expression in HeLa nuclear extract.



Detection limit for recombinant GST tagged LIG1 is approximately 0.3ng/ml as a capture antibody.



Human Thymus: Formalin-Fixed, Paraffin-Embedded (FFPE)

