

## Product datasheet for **AM31806PU-N**

### **INPP5F (OCRL) Mouse Monoclonal Antibody [Clone ID: 4A6]**

#### **Product data:**

Product Type:	Primary Antibodies
Clone Name:	4A6
Applications:	ELISA, IHC, WB
Recommended Dilution:	<b>ELISA.</b> <b>Immunohistochemistry on Paraffin Sections:</b> 5 µg/ml. <b>Western Blot:</b> 1/500 - 1/1000.
Reactivity:	Human
Host:	Mouse
Isotype:	IgG2a
Clonality:	Monoclonal
Immunogen:	OCRL antibody was raised against oCRL (NP_000267, 146 a.a. ~ 240 a.a) partial recombinant protein with GST tag. MW of the GST tag alone is 26 KDa.
Specificity:	This antibody reacts to OCRL.
Formulation:	PBS, pH 7.2 State: Purified State: Liquid purified Ig fraction
Concentration:	lot specific
Purification:	Affinity chromatography on Protein A
Conjugation:	Unconjugated
Storage:	Store the antibody at -20°C. Avoid repeated freezing and thawing.
Stability:	Shelf life: one year from despatch.
Gene Name:	OCRL, inositol polyphosphate-5-phosphatase
Database Link:	<a href="#">Entrez Gene 4952 Human</a> <a href="#">Q01968</a>



[View online »](#)

**Background:**

Relevance Converts phosphatidylinositol 4,5-bisphosphate to phosphatidylinositol 4-phosphate. Also converts inositol 1,4,5-trisphosphate to inositol 1,4-bisphosphate and inositol 1,3,4,5-tetrakisphosphate to inositol 1,3,4-trisphosphate. May function in lysosomal membrane trafficking by regulating the specific pool of phosphatidylinositol 4,5-bisphosphate that is associated with lysosomes.

**Synonyms:**

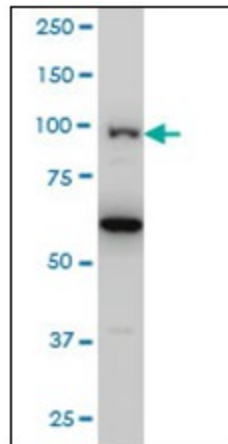
INPP5F, OCRL1, OCRL-1

**Protein Families:**

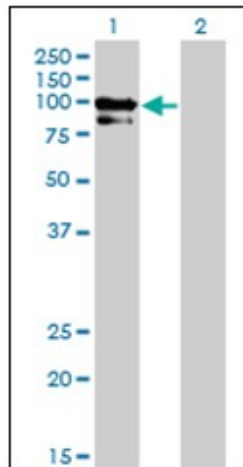
Druggable Genome

**Protein Pathways:**

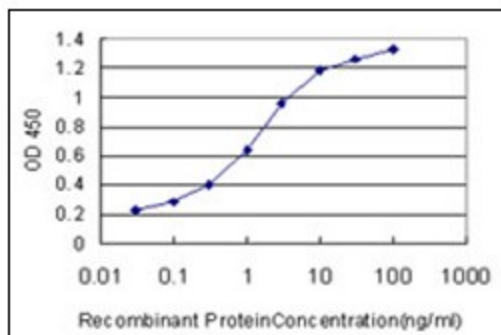
Inositol phosphate metabolism, Metabolic pathways, Phosphatidylinositol signaling system

**Product images:**


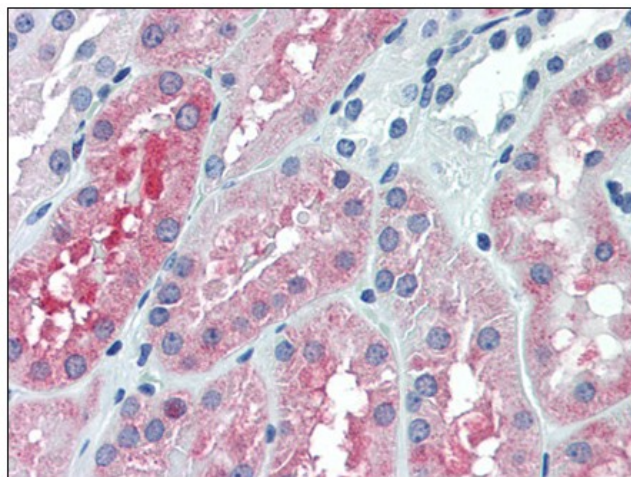
OCRL monoclonal antibody LS-B6106, Western Blot analysis of OCRL expression in HeLa NE.



Western Blot analysis of OCRL expression in transfected 293T cell line by OCRL monoclonal antibody.



Detection limit for recombinant GST tagged OCRL is approximately 0.1ng/ml as a capture antibody.



Human Kidney: Formalin-Fixed, Paraffin-Embedded (FFPE)