

Product datasheet for **AM31805PU-N**

SRP1 (KPNA1) Mouse Monoclonal Antibody [Clone ID: 2A4-1B5]

Product data:

Product Type:	Primary Antibodies
Clone Name:	2A4-1B5
Applications:	ELISA, IHC, WB
Recommended Dilution:	ELISA. Immunohistochemistry on Paraffin Sections: 5 µg/ml. Western Blot: 1/500 - 1/1000.
Reactivity:	Human
Host:	Mouse
Isotype:	IgG1
Clonality:	Monoclonal
Immunogen:	KPNA1 antibody was raised against kPNA1 (AAH02374, 1 a.a. ~ 539 a.a) full length recombinant protein with GST tag. MW of the GST tag alone is 26 KDa.
Specificity:	This antibody reacts to KPNA1 / SRP1.
Formulation:	PBS, pH 7.2 State: Purified State: Liquid purified Ig fraction
Concentration:	lot specific
Purification:	Affinity chromatography on Protein A
Conjugation:	Unconjugated
Storage:	Store the antibody at -20°C to -80°C. Avoid repeated freezing and thawing.
Stability:	Shelf life: one year from despatch.
Gene Name:	karyopherin subunit alpha 1
Database Link:	Entrez Gene 3836 Human P52294



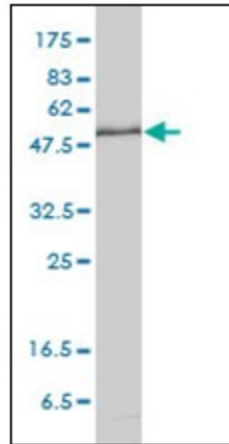
[View online »](#)

Background:

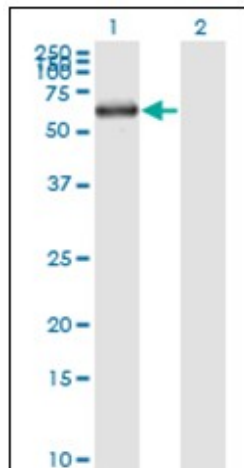
Recombination activating proteins RAG1 and RAG2 regulate and mediate V(D)J recombination, the process by which genes for immunoglobulins and T-cell receptors are generated. Several other ubiquitously expressed proteins are thought to be recruited in the recombination process. Among these are the genes affected in severe combined immune deficiency and genes involved in ds-DNA break repair. The KPNA1 product interacts with RAG1 and may play a role in V(D)J recombination.

Synonyms:

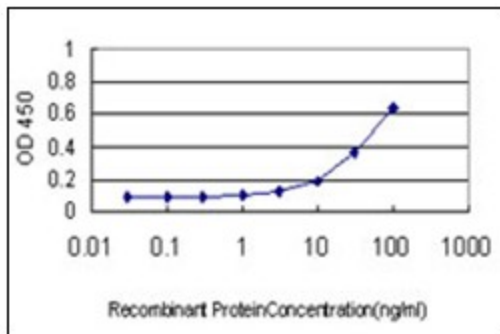
Karyopherin alpha 1, SRP1, SRP1-beta, RCH2, IPOA5, NPI-1, Nucleoprotein interactor 1

Product images:

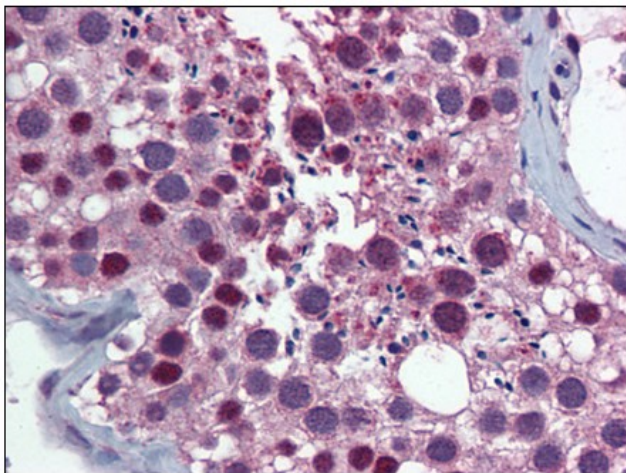
Western Blot analysis of KPNA1 expression in HeLa cell lysate.



Western Blot analysis of KPNA1 expression in transfected 293T cell line by KPNA1 monoclonal antibody.



Detection limit for recombinant GST tagged KPNA1 is approximately 1ng/ml as a capture antibody.



Human Testis: Formalin-Fixed, Paraffin-Embedded (FFPE)