

Product datasheet for **AM31804PU-N**

NM23A (NME1) Mouse Monoclonal Antibody [Clone ID: 1D7]

Product data:

Product Type:	Primary Antibodies
Clone Name:	1D7
Applications:	ELISA, IF, IHC, IP, WB
Recommended Dilution:	ELISA. Immunofluorescence: 10 µg/ml. Immunohistochemistry on Paraffin Sections: 5 µg/ml. Immunoprecipitation. Western Blot: 1/500 - 1/1000.
Reactivity:	Human
Host:	Mouse
Isotype:	IgG1
Clonality:	Monoclonal
Immunogen:	NME1 antibody was raised against nME1 (NP_000260, 43 a.a. ~ 153 a.a) partial recombinant protein with GST tag. MW of the GST tag alone is 26 KDa.
Specificity:	This antibody reacts to NME1.
Formulation:	PBS, pH 7.2 State: Purified State: Liquid purified Ig fraction
Concentration:	lot specific
Purification:	Affinity chromatography on Protein A
Conjugation:	Unconjugated
Storage:	Store the antibody at -20°C. Avoid repeated freezing and thawing.
Stability:	Shelf life: one year from despatch.
Gene Name:	NME/NM23 nucleoside diphosphate kinase 1
Database Link:	Entrez Gene 4830 Human P15531



[View online »](#)

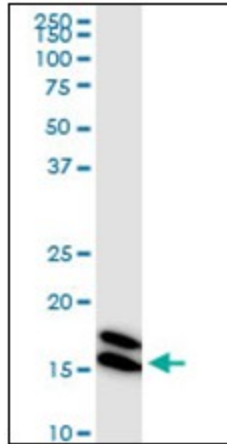
Background: NME1 was identified because of its reduced mRNA transcript levels in highly metastatic cells. NME1 encodes the 'A' isoform of nucleoside diphosphate kinase (NDK). NDK exists as a hexamer composed of the 'A' (NME1) and 'B' (encoded by NME2) isoforms. Mutations in NME1 have been identified in aggressive neuroblastomas.

Synonyms: NME1, NDPKA, NM23, nm23-H1, GAAD

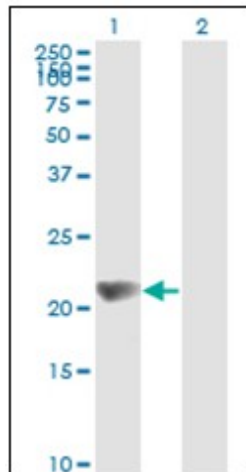
Protein Families: Druggable Genome, Stem cell - Pluripotency

Protein Pathways: Metabolic pathways, Purine metabolism, Pyrimidine metabolism

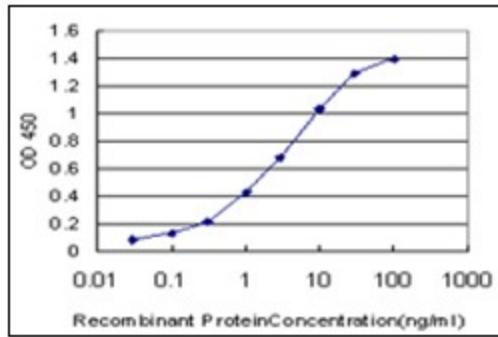
Product images:



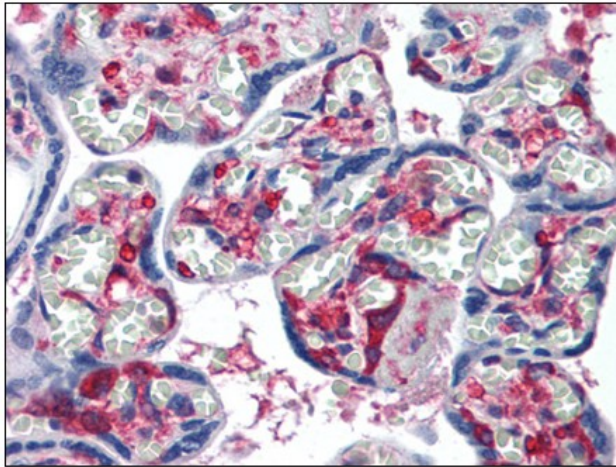
NME1 monoclonal antibody LS-B6104. Western Blot analysis of NME1 expression in HeLa.



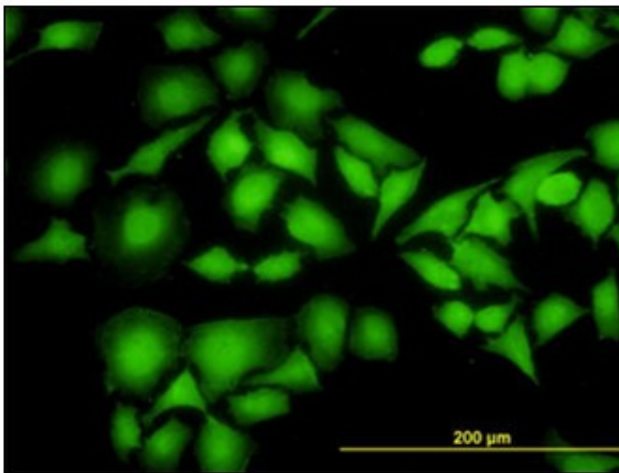
Western Blot analysis of NME1 expression in transfected 293T cell line by NME1 monoclonal antibody



Detection limit for recombinant GST tagged NME1 is approximately 0.1ng/ml as a capture antibody.



Human Placenta: Formalin-Fixed, Paraffin-Embedded (FFPE)



Immunofluorescence of monoclonal antibody to NME1 on HeLa cell. [antibody concentration 10 ug/ml]