

Product datasheet for **AM31792PU-N**

GSTM2 Mouse Monoclonal Antibody [Clone ID: 1E10]

Product data:

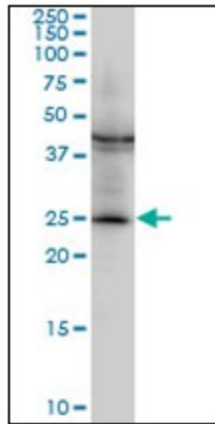
Product Type:	Primary Antibodies
Clone Name:	1E10
Applications:	ELISA, IHC, WB
Recommended Dilution:	ELISA. Immunohistochemistry on Paraffin Sections: 5 µg/ml. Western Blot: 1/500 - 1/1000.
Reactivity:	Human, Mouse
Host:	Mouse
Isotype:	IgG1
Clonality:	Monoclonal
Immunogen:	GSTM2 (NP_000839, 90 a.a. ~ 190 a.a) partial recombinant protein with GST tag. MW of the GST tag alone is 26 KDa.
Specificity:	This antibody reacts to GSTM2.
Formulation:	PBS, pH 7.2 State: Purified State: Liquid purified Ig fraction
Concentration:	lot specific
Purification:	Affinity Chromatography on Protein A
Conjugation:	Unconjugated
Storage:	Store the antibody at -20°C to -80°C. Avoid repeated freezing and thawing.
Stability:	Shelf life: one year from despatch.
Gene Name:	glutathione S-transferase mu 2 (muscle)
Database Link:	Entrez Gene 14863 Mouse Entrez Gene 2946 Human P28161
Synonyms:	Glutathione S-transferase Mu 2, GSTM2-2, GST class-mu 2



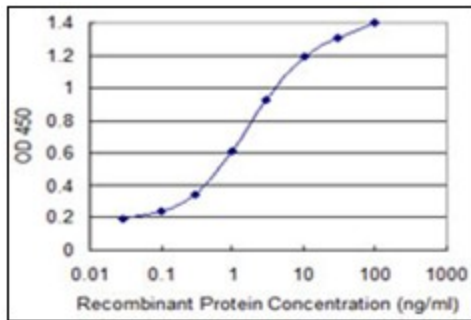
[View online »](#)

Protein Pathways: Drug metabolism - cytochrome P450, Glutathione metabolism, Metabolism of xenobiotics by cytochrome P450

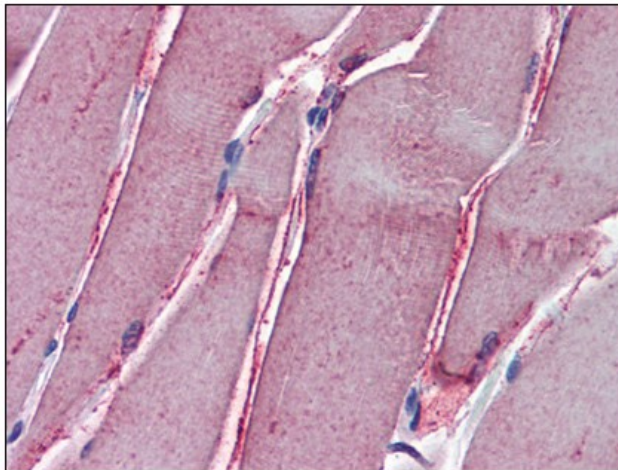
Product images:



Western Blot analysis of GSTM2 expression in NIH/3T3 cell lysate.



Detection limit for recombinant GST tagged GSTM2 is 0.03 ng/ml as a capture antibody.



Human Skeletal Muscle: Formalin-Fixed, Paraffin-Embedded (FFPE)