

Product datasheet for **AM31781PU-N**

EP300 (731-831) Mouse Monoclonal Antibody [Clone ID: 1D2]

Product data:

| | |
|-----------------------|---|
| Product Type: | Primary Antibodies |
| Clone Name: | 1D2 |
| Applications: | ELISA, IF, IHC, WB |
| Recommended Dilution: | ELISA. Immunofluorescence: 10 µg/ml. Immunohistochemistry on Paraffin Sections: 5 µg/ml. Western Blot: 1/500 - 1/1000. |
| Reactivity: | Human |
| Host: | Mouse |
| Isotype: | IgG1 |
| Clonality: | Monoclonal |
| Immunogen: | EP300 (NP_001420, 731 a.a. ~ 831 a.a) partial recombinant protein with GST tag. |
| Specificity: | This antibody recognizes EP300 / p300 at aa 731-831. |
| Formulation: | PBS, pH 7.4 State: Purified State: Liquid purified Ig fraction |
| Concentration: | lot specific |
| Purification: | Affinity Chromatography on Protein A |
| Conjugation: | Unconjugated |
| Storage: | Upon receipt, store (in aliquots) at -20°C to -80°C. Avoid repeated freezing and thawing. |
| Stability: | Shelf life: one year from despatch. |
| Gene Name: | E1A binding protein p300 |
| Database Link: | Entrez Gene 2033 Human Q09472 |



[View online »](#)

Background:

EP300 encodes the adenovirus E1A-associated cellular p300 transcriptional co-activator protein. p300 is related by sequence to CPB (CREB-binding protein [CREB: cyclic-AMP responsive element binding protein]), and like CPB can stimulate transcription through activation of CREB. This EP300 activity is specifically inhibited by the adenovirus oncoprotein E1A. EP300 has also been identified as a co-activator of HIF1A (hypoxia-inducible factor 1 alpha), and thus plays a role in the stimulation of hypoxia-induced genes such as VEGF.

Synonyms:

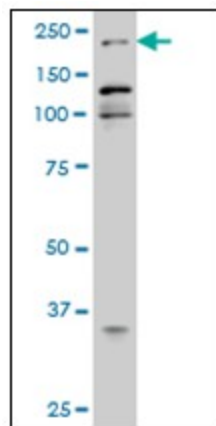
p300 HAT, KAT3B, Histone acetyltransferase p300

Protein Families:

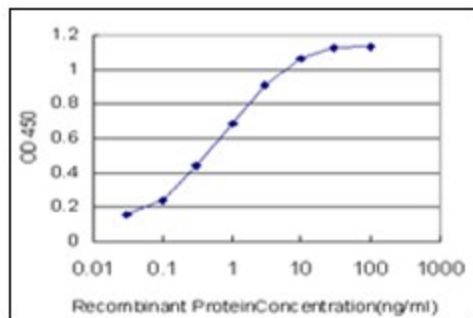
Druggable Genome, Transcription Factors

Protein Pathways:

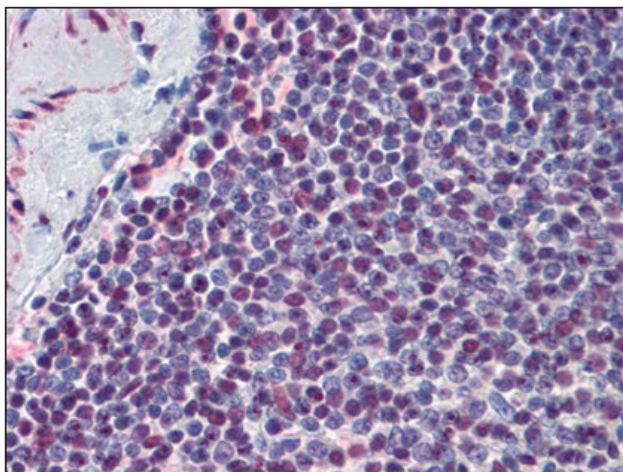
Adherens junction, Cell cycle, Huntington's disease, Jak-STAT signaling pathway, Long-term potentiation, Melanogenesis, Notch signaling pathway, Pathways in cancer, Prostate cancer, Renal cell carcinoma, TGF-beta signaling pathway, Wnt signaling pathway

Product images:


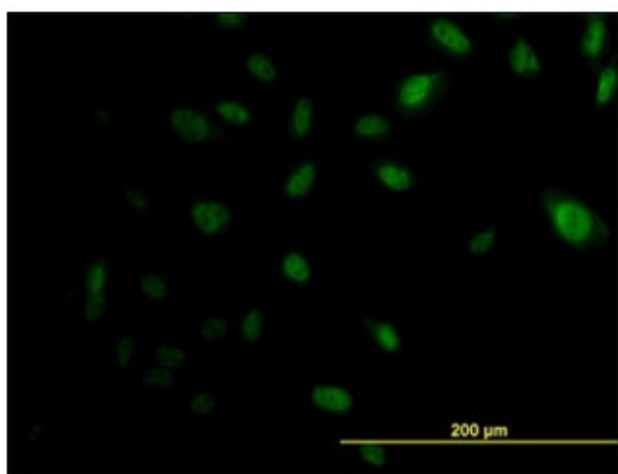
Western Blot analysis of EP300 expression in HeLa nuclear extract.



Detection limit for recombinant GST tagged EP300 is approximately 0.03ng/ml as a capture antibody.



Human Spleen: Formalin-Fixed, Paraffin-Embedded (FFPE)



Immunofluorescence of monoclonal antibody to EP300 on HeLa cell. [antibody concentration 10 ug/ml]