

Product datasheet for **AM31776PU-N**

Lipoamide Dehydrogenase (DLD) Mouse Monoclonal Antibody [Clone ID: 3C1]

Product data:

Product Type:	Primary Antibodies
Clone Name:	3C1
Applications:	ELISA, IHC, WB
Recommended Dilution:	ELISA. Immunohistochemistry on Paraffin Sections: 5 µg/ml. Western Blot: 1/500 - 1/1000.
Reactivity:	Human
Host:	Mouse
Isotype:	IgG3
Clonality:	Monoclonal
Immunogen:	DLD (AAH18696, 1 a.a. ~ 510 a.a) full length recombinant protein with GST tag. MW of the GST tag alone is 26 KDa.
Specificity:	This antibody recognizes DLD / DLDH.
Formulation:	PBS, pH 7.2 State: Purified State: Liquid purified Ig fraction
Concentration:	lot specific
Purification:	Affinity Chromatography on Protein A
Conjugation:	Unconjugated
Storage:	Upon receipt, store (in aliquots) at -20°C to -80°C. Avoid repeated freezing and thawing.
Stability:	Shelf life: one year from despatch.
Gene Name:	dihydrolipoamide dehydrogenase
Database Link:	Entrez Gene 1738 Human P09622
Background:	Dihydrolipoyl dehydrogenase is a component of the mitochondrial pyruvate and alpha-ketoglutarate dehydrogenase complexes. Defects in the enzyme cause congenital infantile lactic acidosis.



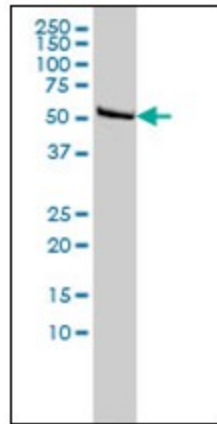
[View online »](#)

Synonyms: DLD, GCSL, LAD, PHE3, EC 1.8.1.4, Dihydrolipoamide dehydrogenase, Glycine cleavage system L protein

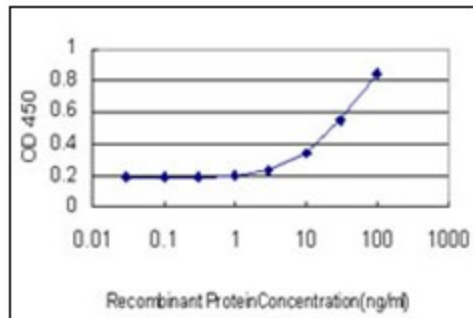
Protein Families: Druggable Genome

Protein Pathways: Citrate cycle (TCA cycle), Glycine, serine and threonine metabolism, Glycolysis / Gluconeogenesis, Metabolic pathways, Pyruvate metabolism, Valine, leucine and isoleucine degradation

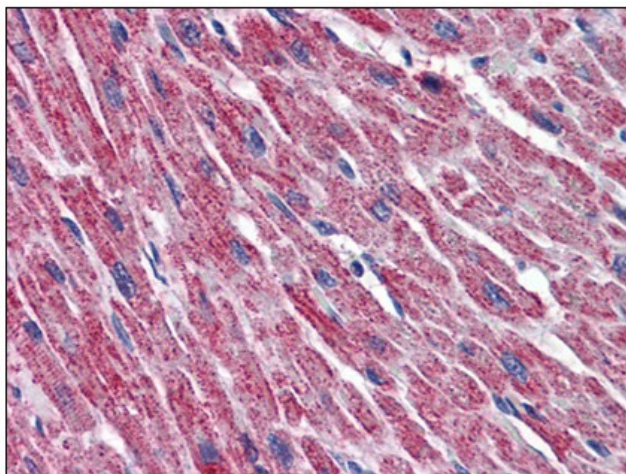
Product images:



Western Blot analysis of DLD expression in HeLa cell lysate.



Detection limit for recombinant GST tagged DLD is approximately 1 ng/ml as a capture antibody.



Human Heart: Formalin-Fixed, Paraffin-Embedded (FFPE)