

Product datasheet for **AM31774PU-N**

Stefin B (CSTB) Mouse Monoclonal Antibody [Clone ID: M2-F1]

Product data:

Product Type:	Primary Antibodies
Clone Name:	M2-F1
Applications:	ELISA, IF, IHC, WB
Recommended Dilution:	ELISA. Immunofluorescence: 10 µg/ml. Immunohistochemistry on Paraffin Sections: 5 µg/ml. Western Blot: 1/500 - 1/1000.
Reactivity:	Human
Host:	Mouse
Isotype:	IgG1
Clonality:	Monoclonal
Immunogen:	CSTB antibody was raised against cSTB (AAH03370.1, 1 a.a. ~ 98 a.a) full length recombinant protein with GST tag. MW of the GST tag alone is 26 KDa.
Specificity:	This antibody reacts to CSTB / Stefin B.
Formulation:	PBS, pH 7.2 State: Purified State: Liquid purified Ig fraction
Concentration:	lot specific
Purification:	Affinity chromatography on Protein A
Conjugation:	Unconjugated
Storage:	Store the antibody at -20°C to -80°C. Avoid repeated freezing and thawing.
Stability:	Shelf life: one year from despatch.
Gene Name:	cystatin B
Database Link:	Entrez Gene 1476 Human P04080



[View online »](#)

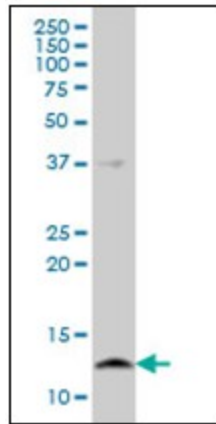
Background:

This is an intracellular thiol proteinase inhibitor. Tightly binding reversible inhibitor of cathepsins L, H and B.

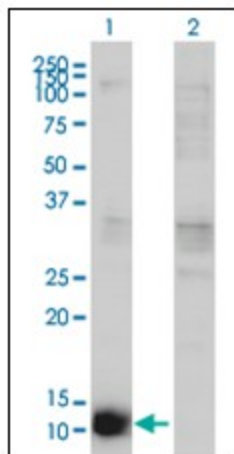
Defects in CSTB are the cause of progressive myoclonic epilepsy type 1 (EPM1) [MIM:254800]. EPM1 is an autosomal recessive disorder characterized by severe, stimulus-sensitive myoclonus and tonic-clonic seizures. The onset, occurring between 6 and 13 years of age, is characterized by convulsions. Myoclonus begins 1 to 5 years later. The twitchings occur predominantly in the proximal muscles of the extremities and are bilaterally symmetrical, although asynchronous. At first small, they become late in the clinical course so violent that the victim is thrown to the floor. Mental deterioration and eventually dementia develop.

Synonyms:

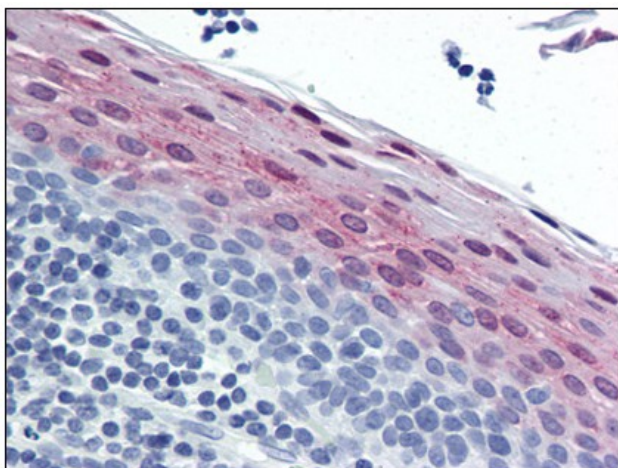
Stefin-B, CPI-B, CSTB, CST6, STFB

Product images:

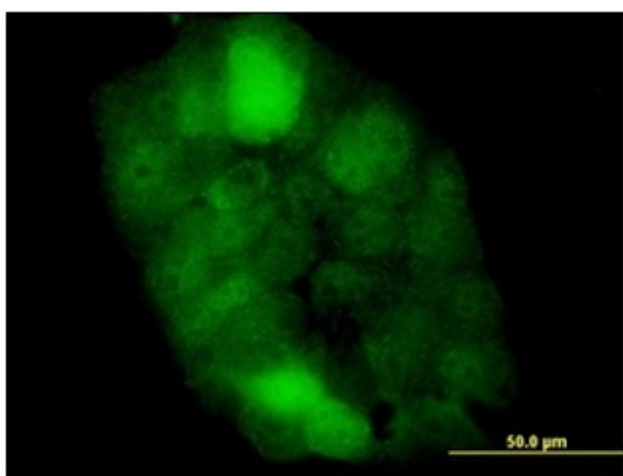
Western Blot analysis of CSTB expression in A-431 cell lysate.



Western Blot analysis of CSTB expression in transfected 293T cell line by CSTB antibody. Lane 1: CSTB transfected lysate (11 kDa). Lane 2: Non-transfected lysate.



Human Tonsil: Formalin-Fixed, Paraffin-Embedded (FFPE)



Immunofluorescence of monoclonal antibody to CSTB on A-431 cell. [antibody concentration 10 ug/ml]