

Product datasheet for **AM31770PU-N**

FZR1 Mouse Monoclonal Antibody [Clone ID: 4C4]

Product data:

Product Type:	Primary Antibodies
Clone Name:	4C4
Applications:	ELISA, IHC, WB
Recommended Dilution:	ELISA. Immunohistochemistry on Paraffin Sections: 5 µg/ml. Western Blot: 1/500 - 1/1000.
Reactivity:	Human
Host:	Mouse
Isotype:	IgG2a
Clonality:	Monoclonal
Immunogen:	FZR1 antibody was raised against fZR1 (AAH13413, 1 a.a. ~ 494 a.a) full-length recombinant protein with GST tag. MW of the GST tag alone is 26 KDa.
Specificity:	This antibody reacts to FZR1.
Formulation:	PBS, pH 7.2 State: Purified State: Liquid purified Ig fraction
Concentration:	lot specific
Purification:	Affinity chromatography on Protein A
Conjugation:	Unconjugated
Storage:	Store the antibody undiluted at 2-8°C for one month or (in aliquots) at -20°C for longer. Avoid repeated freezing and thawing.
Stability:	Shelf life: one year from despatch.
Gene Name:	fizzy/cell division cycle 20 related 1
Database Link:	Entrez Gene 51343 Human Q9UM11



[View online »](#)

Background:

Key regulator of ligase activity of the anaphase promoting complex/cyclosome (APC/C), which confers substrate specificity upon the complex. Associates with the APC/C in late mitosis, in replacement of CDC20, and activates the APC/C during anaphase and telophase. The APC/C remains active in degrading substrates to ensure that positive regulators of the cell cycle do not accumulate prematurely. At the G1/S transition FZR1 is phosphorylated, leading to its dissociation from the APC/C. Following DNA damage, it is required for the G2 DNA damage checkpoint: its dephosphorylation and reassociation with the APC/C leads to the ubiquitination of PLK1, preventing entry into mitosis.

Synonyms:

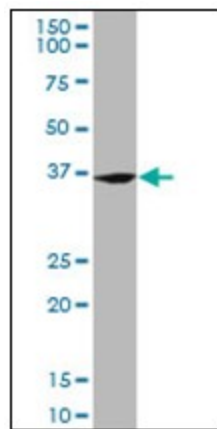
Cdh1/Hct1 homolog, CDC20-like protein 1, Fizzy-related protein homolog, FYR, FZR, KIAA1242

Protein Families:

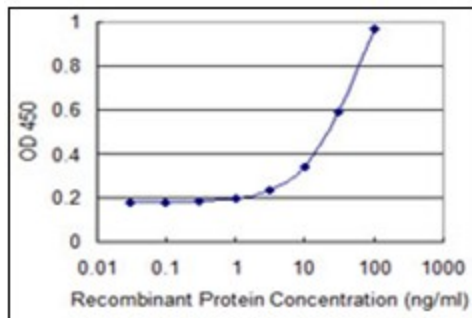
Druggable Genome

Protein Pathways:

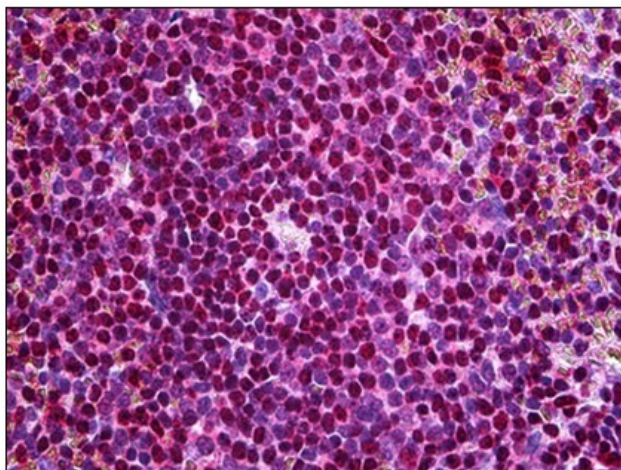
Cell cycle, Progesterone-mediated oocyte maturation, Ubiquitin mediated proteolysis

Product images:


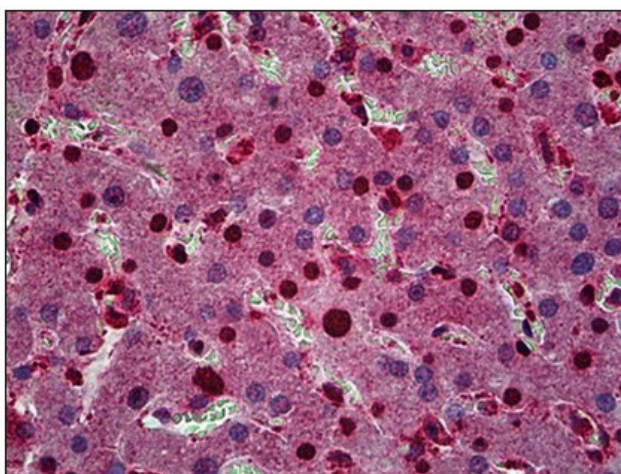
FZR1 monoclonal antibody, clone 4C4. Western Blot analysis of FZR1 expression in Hela NE.



Detection limit for recombinant GST tagged FZR1 is 1 ng/ml as a capture antibody.



Human Spleen: Formalin-Fixed, Paraffin-Embedded (FFPE)



Human Liver: Formalin-Fixed, Paraffin-Embedded (FFPE)