

## Product datasheet for **AM31769PU-N**

### VCP Mouse Monoclonal Antibody [Clone ID: 4A8]

#### Product data:

Product Type:	Primary Antibodies
Clone Name:	4A8
Applications:	ELISA, IHC, WB
Recommended Dilution:	<b>ELISA.</b> <b>Immunohistochemistry on Paraffin Sections:</b> 5 µg/ml. <b>Western Blot:</b> 1/500 - 1/1000.
Reactivity:	Human
Host:	Mouse
Isotype:	IgG2a
Clonality:	Monoclonal
Immunogen:	VCP antibody was raised against vCP (AAH07562, 1 a.a. ~ 589 a.a) full-length recombinant protein with GST tag. MW of the GST tag alone is 26 KDa.
Specificity:	This antibody reacts to VCP.
Formulation:	PBS, pH 7.2 State: Purified State: Liquid purified Ig fraction
Concentration:	lot specific
Purification:	Affinity chromatography on Protein A
Conjugation:	Unconjugated
Storage:	Store the antibody undiluted at 2-8°C for one month or (in aliquots) at -20°C for longer. Avoid repeated freezing and thawing.
Stability:	Shelf life: one year from despatch.
Gene Name:	valosin containing protein
Database Link:	<a href="#">Entrez Gene 7415 Human P55072</a>



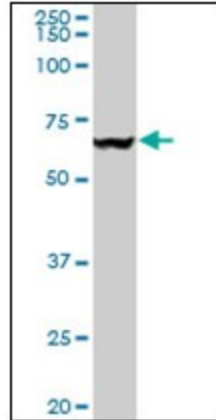
[View online »](#)

**Background:**

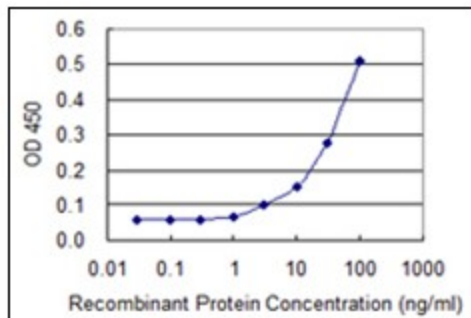
Valsolin Containing Protein (VCP) is a member of a family that includes putative ATP-binding proteins involved in vesicle transport and fusion, 26S proteasome function, and assembly of peroxisomes. VCP, as a structural protein, is associated with clathrin, and heat-shock protein Hsc70, to form a complex. VCP has been implicated in a number of cellular events that are regulated during mitosis, including homotypic membrane fusion, spindle pole body function, and ubiquitin-dependent protein degradation.

**Synonyms:**

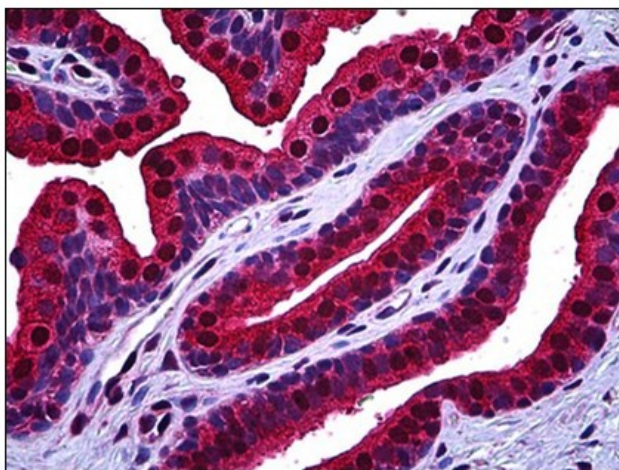
15S Mg(2+)-ATPase p97 subunit, Valosin-containing protein

**Product images:**


VCP monoclonal antibody, clone 4A8. Western Blot analysis of VCP expression in HepG2.



Detection limit for recombinant GST tagged VCP is 1 ng/ml as a capture antibody.



Human Prostate: Formalin-Fixed, Paraffin-Embedded (FFPE)