

Product datasheet for **AM31765PU-N**

PPM1A Mouse Monoclonal Antibody [Clone ID: 4E11]

Product data:

Product Type:	Primary Antibodies
Clone Name:	4E11
Applications:	ELISA, IHC, WB
Recommended Dilution:	ELISA. Immunohistochemistry on Paraffin Sections: 5 µg/ml. Western Blot: 1/500 - 1/1000.
Reactivity:	Human
Host:	Mouse
Isotype:	IgG2a
Clonality:	Monoclonal
Immunogen:	PPM1A antibody was raised against pPM1A (AAH26691, 1 a.a. ~ 383 a.a) full-length recombinant protein with GST tag. MW of the GST tag alone is 26 KDa.
Specificity:	This antibody reacts to PPM1A.
Formulation:	PBS, pH 7.2 State: Purified State: Liquid purified Ig fraction
Concentration:	lot specific
Purification:	Affinity chromatography
Conjugation:	Unconjugated
Storage:	Store the antibody undiluted at 2-8°C for one month or (in aliquots) at -20°C for longer. Avoid repeated freezing and thawing.
Stability:	Shelf life: one year from despatch.
Gene Name:	protein phosphatase, Mg ²⁺ /Mn ²⁺ dependent 1A
Database Link:	Entrez Gene 5494 Human P35813



[View online »](#)

Background:

Protein Phosphatase 1A alpha (PPM1A), a PP2C type serine/threonine phosphatase, is a monomeric enzyme whose phosphatase activity is dependent on magnesium. Two isoforms (alpha 1 and alpha 2) which differ at their carboxy terminus have been identified. Overexpression of rat PPM1A in yeast results in decreased growth rates and increased UV sensitivity. Human PPM1A has been shown to inhibit the activation of the stress-responsive p38 and JNK MAPK cascades. Additionally, the protein has been shown to directly associate with p38 in stress-stimulated mammalian cells. Thus, it is believed that PPM1A is essential for regulating cellular stress response in eukaryotes.

Synonyms:

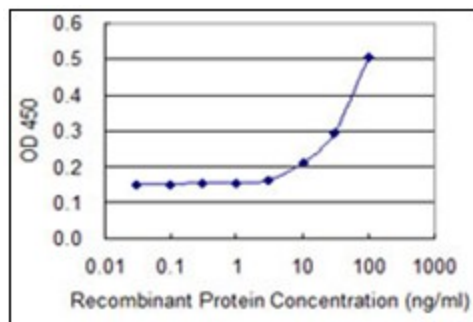
PPM1A, Protein phosphatase 2C isoform alpha, PP2C-alpha, Protein phosphatase IA

Protein Families:

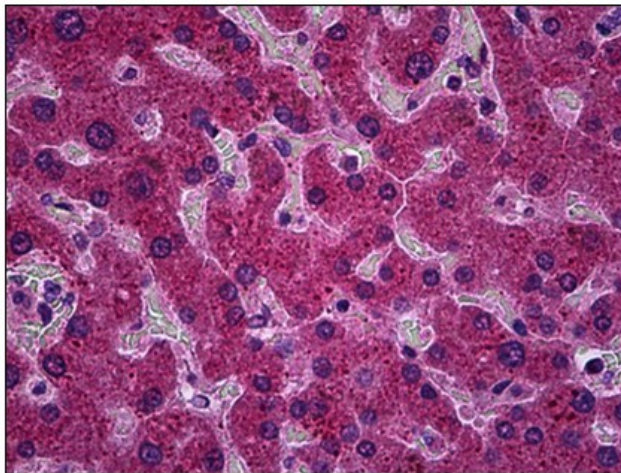
Druggable Genome, Phosphatase

Protein Pathways:

MAPK signaling pathway

Product images:

Detection limit for recombinant GST tagged PPM1A is 3 ng/ml as a capture antibody.



Human Liver: Formalin-Fixed, Paraffin-Embedded (FFPE)