

Product datasheet for **AM31764PU-N**

PIM1 Mouse Monoclonal Antibody [Clone ID: X1]

Product data:

Product Type:	Primary Antibodies
Clone Name:	X1
Applications:	ELISA, IF, IHC
Recommended Dilution:	ELISA. Immunofluorescence: 10 µg/ml. Immunohistochemistry on Paraffin Sections: 5 µg/ml.
Reactivity:	Human
Host:	Mouse
Isotype:	IgG2a
Clonality:	Monoclonal
Immunogen:	PIM1 antibody was raised against pIM1 (AAH20224, 1 a.a. ~ 314 a.a) full length recombinant protein with GST tag. MW of the GST tag alone is 26 KDa.
Specificity:	This antibody reacts to PIM1.
Formulation:	PBS, pH 7.2 State: Purified State: Liquid purified Ig fraction
Concentration:	lot specific
Purification:	Affinity chromatography on Protein A
Conjugation:	Unconjugated
Storage:	Store the antibody undiluted at 2-8°C for one month or (in aliquots) at -20°C for longer. Avoid repeated freezing and thawing.
Stability:	Shelf life: one year from despatch.
Gene Name:	Pim-1 proto-oncogene, serine/threonine kinase
Database Link:	Entrez Gene 5292 Human P11309



[View online »](#)

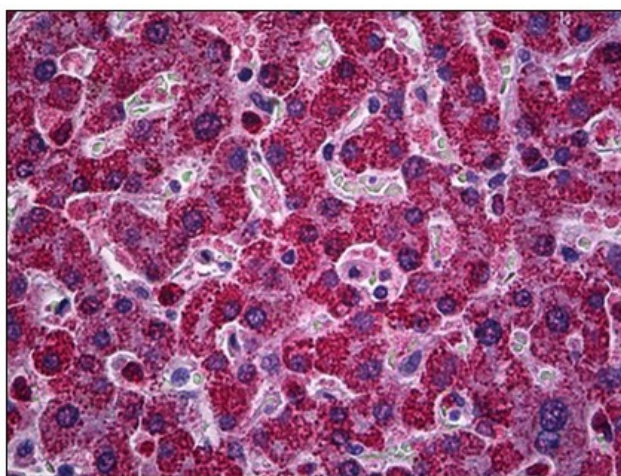
Background: PIM-1, an immediate early gene in the PIM subfamily of kinases, has been implicated in the regulation of proliferation, differentiation and cell survival of lymphoid and myeloid cells. PIM-1 is a cytoplasmic modulator of the interleukin-3 signal transduction pathway. Two isoforms of PIM-1 exist: the larger protein is an amino-terminal extension of the smaller protein and is synthesized by alternative translation initiation at an upstream CUG codon.

Synonyms: Pim-1

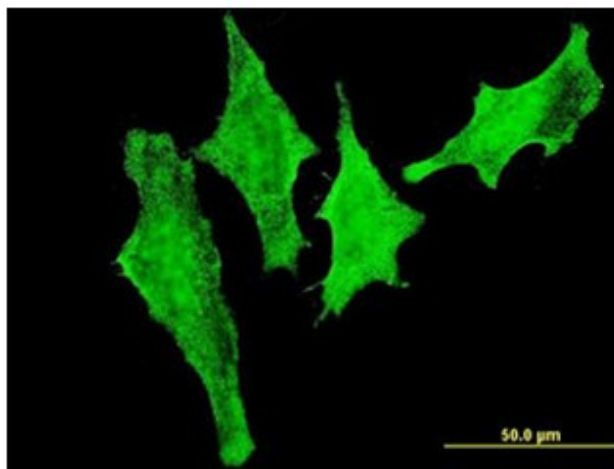
Protein Families: Druggable Genome, ES Cell Differentiation/IPS, Protein Kinase

Protein Pathways: Acute myeloid leukemia, Jak-STAT signaling pathway

Product images:



Human Liver: Formalin-Fixed, Paraffin-Embedded (FFPE)



Immunofluorescence of monoclonal antibody to PIM1 on HeLa cell. [antibody concentration 10 ug/ml]