

Product datasheet for **AM31763PU-N**

Lamin B1 (LMNB1) (107-186) Mouse Monoclonal Antibody [Clone ID: 4E4]

Product data:

Product Type:	Primary Antibodies
Clone Name:	4E4
Applications:	ELISA, IHC, WB
Recommended Dilution:	ELISA. Immunohistochemistry on Paraffin Sections: 3 µg/ml. Western Blot: 1/500 - 1/1000.
Reactivity:	Human, Mouse
Host:	Mouse
Isotype:	IgG2a
Clonality:	Monoclonal
Immunogen:	LMNB1 (NP_005564, 107 a.a. ~ 186 a.a) partial recombinant protein with GST tag
Specificity:	This antibody reacts to LMNB1 / Lamin B1 at aa 107-186.
Formulation:	PBS, pH 7.4 State: Purified State: Liquid purified IgG fraction
Concentration:	lot specific
Purification:	Affinity Chromatography on Protein A
Conjugation:	Unconjugated
Storage:	Upon receipt, store undiluted (in aliquots) at -20°C. Avoid repeated freezing and thawing.
Stability:	Shelf life: one year from despatch.
Gene Name:	lamin B1
Database Link:	Entrez Gene 16906 Mouse Entrez Gene 4001 Human P20700



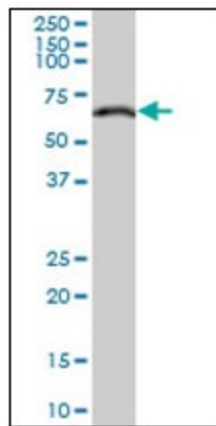
[View online »](#)

Background:

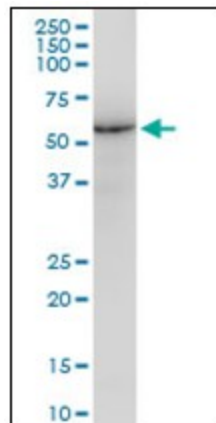
Lamins are components of the nuclear lamina, a fibrous layer on the nucleoplasmic side of the inner nuclear membrane, which is thought to provide a framework for the nuclear envelope and may also interact with chromatin. Defects in LMNB1 are the cause of leukodystrophy demyelinating autosomal dominant adult-onset (ADLD) [MIM:169500]. ADLD is a slowly progressive and fatal demyelinating leukodystrophy, presenting in the fourth or fifth decade of life. Clinically characterized by early autonomic abnormalities, pyramidal and cerebellar dysfunction, and symmetric demyelination of the CNS. It differs from multiple sclerosis and other demyelinating disorders in that neuropathology shows preservation of oligodendroglia in the presence of subtotal demyelination and lack of astrogliosis.

Synonyms:

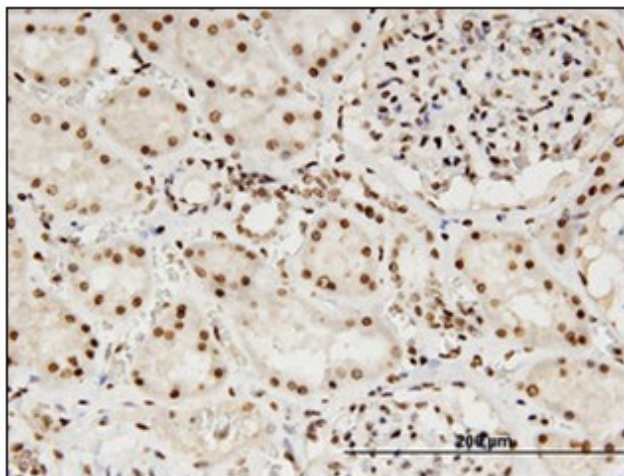
Lamin-B1, LMNB1, LMNB-1, LMN2, LMNB, Nuclear Envelope Marker

Product images:


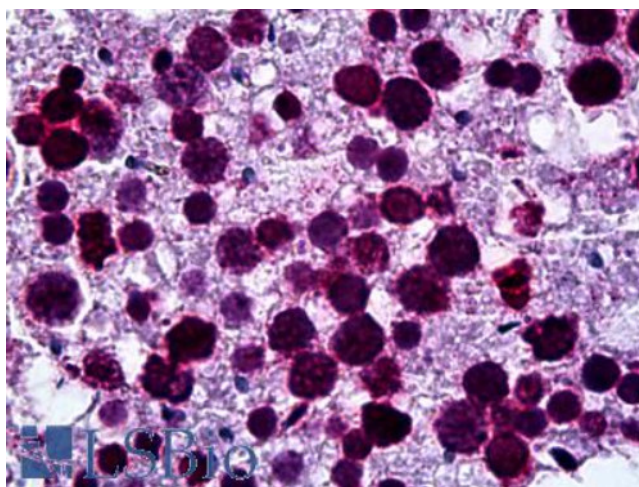
LMNB1 monoclonal antibody, clone 4E4. Western Blot analysis of LMNB1 expression in Jurkat.



LMNB1 monoclonal antibody, clone 4E4. Western Blot analysis of LMNB1 expression in NIH/3T3.



Immunoperoxidase of monoclonal antibody to LMNB1 on formalin-fixed paraffin-embedded human kidney. [antibody concentration 3 ug/ml]



Anti-LMNB1 / Lamin B1 antibody IHC of human testis. Immunohistochemistry of formalin-fixed, paraffin-embedded tissue after heat-induced antigen retrieval. Antibody concentration 3 ug/ml