

Product datasheet for **AM31760PU-N**

c Kit (KIT) Mouse Monoclonal Antibody [Clone ID: 4F7]

Product data:

Product Type:	Primary Antibodies
Clone Name:	4F7
Applications:	ELISA, IHC, WB
Recommended Dilution:	ELISA. Immunohistochemistry on Paraffin Sections: 2.5 µg/ml. Western Blot: 1/500 - 1/1000.
Reactivity:	Human
Host:	Mouse
Isotype:	IgG
Clonality:	Monoclonal
Immunogen:	KIT antibody was raised against kIT (NP_000213, 41 a.a. ~ 140 a.a) partial recombinant protein with GST tag. MW of the GST tag alone is 26 KDa.
Specificity:	This antibody reacts to KIT.
Formulation:	PBS, pH 7.2 State: Purified State: Liquid purified Ig fraction
Concentration:	lot specific
Purification:	Affinity chromatography on Protein A
Conjugation:	Unconjugated
Storage:	Store the antibody undiluted at 2-8°C for one month or (in aliquots) at -20°C for longer. Avoid repeated freezing and thawing.
Stability:	Shelf life: one year from despatch.
Gene Name:	KIT proto-oncogene receptor tyrosine kinase
Database Link:	Entrez Gene 3815 Human P10721



[View online »](#)

Background:

KIT encodes the human homolog of the proto-oncogene c-kit. C-kit was first identified as the cellular homolog of the feline sarcoma viral oncogene v-kit. KIT is a type 3 transmembrane receptor for MGF (mast cell growth factor, also known as stem cell factor). Somatic gain-of-function mutations in the extracellular domain, kinase domains 1 and 2 are found in gastrointestinal stromal tumors (GISTs). Mutations in c-KIT gene are also associated with mast cell disease, acute myelogenous leukemia, and piebaldism. Tyrosine kinase inhibitor STI571 has been shown to inhibit GIST cells that express mutated c-KIT.

Synonyms:

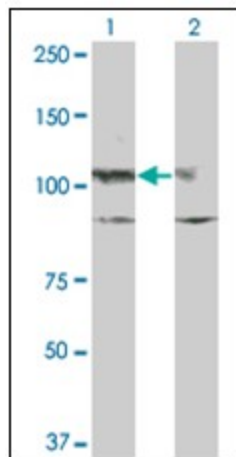
SCFR, KIT

Protein Families:

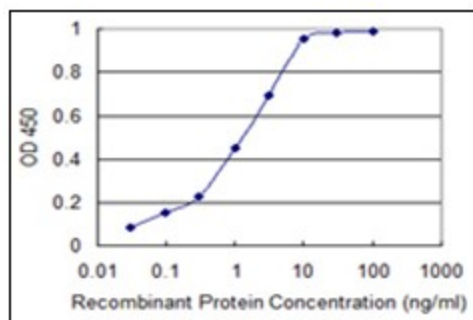
Adult stem cells, Druggable Genome, Embryonic stem cells, ES Cell Differentiation/IPS, Protein Kinase, Stem cell - Pluripotency, Transmembrane

Protein Pathways:

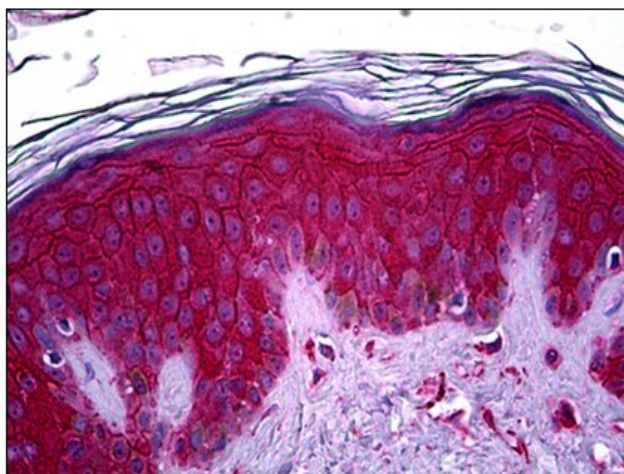
Acute myeloid leukemia, Cytokine-cytokine receptor interaction, Endocytosis, Hematopoietic cell lineage, Melanogenesis, Pathways in cancer

Product images:


Western Blot analysis of KIT expression in transfected 293T cell line by KIT monoclonal antibody, clone 4F7.



Detection limit for recombinant GST tagged KIT is 0.03 ng/ml as a capture antibody.



Human Skin: Formalin-Fixed, Paraffin-Embedded (FFPE)