

Product datasheet for **AM31757PU-N**

RBM3 Mouse Monoclonal Antibody [Clone ID: 4D6]

Product data:

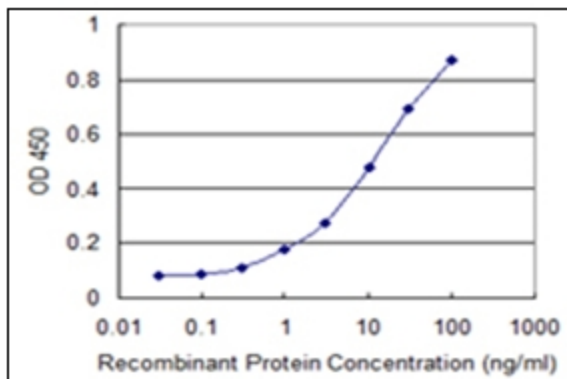
Product Type:	Primary Antibodies
Clone Name:	4D6
Applications:	ELISA, IHC, WB
Recommended Dilution:	ELISA. Immunohistochemistry on Paraffin Sections: 10 - 20 µg/ml. Western Blot: 1/500 - 1/1000.
Reactivity:	Human
Host:	Mouse
Isotype:	IgG1
Clonality:	Monoclonal
Immunogen:	RBM3 (NP_006734, 1 a.a. ~ 81 a.a) partial recombinant protein with GST tag.
Specificity:	Recognizes Human RBM3. Other species not tested.
Formulation:	PBS, pH 7.2 State: Purified State: Liquid purified Ig fraction
Concentration:	lot specific
Purification:	Protein A Chromatography
Conjugation:	Unconjugated
Storage:	Upon receipt, store (in aliquots) at -20°C to -80°C. Avoid repeated freezing and thawing.
Stability:	Shelf life: one year from despatch.
Gene Name:	RNA binding motif (RNP1, RRM) protein 3
Database Link:	Entrez Gene 5935 Human P98179
Background:	RBM3 is a member of the glycine-rich RNA-binding protein family and a protein with one RNA recognition motif (RRM) domain. Expression of this protein is induced by cold shock and low oxygen tension.



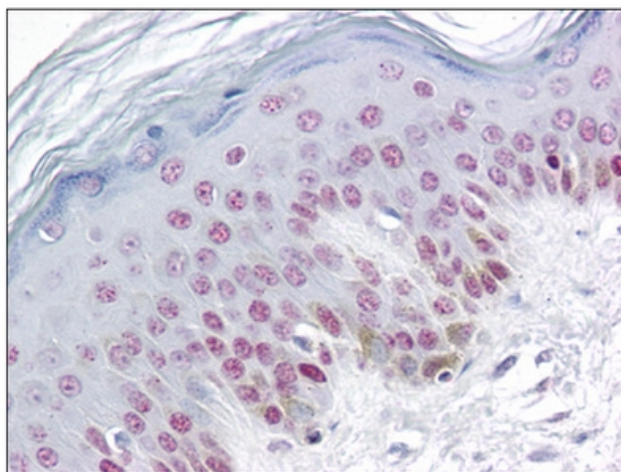
[View online »](#)

Synonyms: RBM-3, RNPL, RNA-binding protein 3, RNA-binding motif protein 3

Product images:



Detection limit for recombinant GST tagged RBM3 is 0.1 ng/ml as a capture antibody.



Human Skin: Formalin-Fixed, Paraffin-Embedded (FFPE)