

## Product datasheet for **AM31755PU-N**

### SLC13A5 Mouse Monoclonal Antibody [Clone ID: 2G4]

#### Product data:

Product Type:	Primary Antibodies
Clone Name:	2G4
Applications:	ELISA, IHC, WB
Recommended Dilution:	<b>ELISA.</b> <b>Immunohistochemistry on Paraffin Sections:</b> 5 µg/ml. <b>Western Blot:</b> 1/500 - 1/1000.
Reactivity:	Human
Host:	Mouse
Isotype:	IgG1
Clonality:	Monoclonal
Immunogen:	SLC13A5 (NP_808218, 152 a.a. ~ 207 a.a) partial recombinant protein with GST tag.
Specificity:	Recognizes Human SLC13A5. Cellular localization: Membrane; Multi pass membrane protein.
Formulation:	PBS, pH 7.2 State: Purified State: Liquid purified Ig fraction
Concentration:	lot specific
Purification:	Protein A Chromatography
Conjugation:	Unconjugated
Storage:	Store the antibody undiluted at 2-8°C for one month or (in aliquots) at -20°C for longer. Avoid freeze-thaw cycles.
Stability:	Shelf life: one year from despatch.
Gene Name:	solute carrier family 13 member 5
Database Link:	<a href="#">Entrez Gene 284111 Human</a> <a href="#">Q86YT5</a>



[View online »](#)

**Background:**

SLC13A5 is a tricarboxylate plasma membrane transporter or high affinity sodium/citrate cotransporter that mediates citrate entry into cells. The transport process is electrogenic; it is the trivalent form of citrate rather than the divalent form that is recognized as a substrate. May facilitate the utilization of circulating citrate for the generation of metabolic energy and for the synthesis of fatty acids and cholesterol.

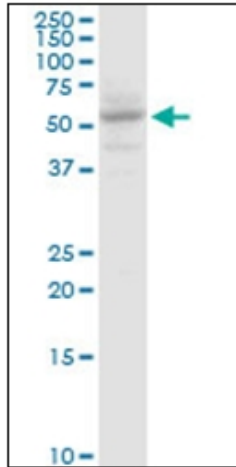
**Synonyms:**

NACT

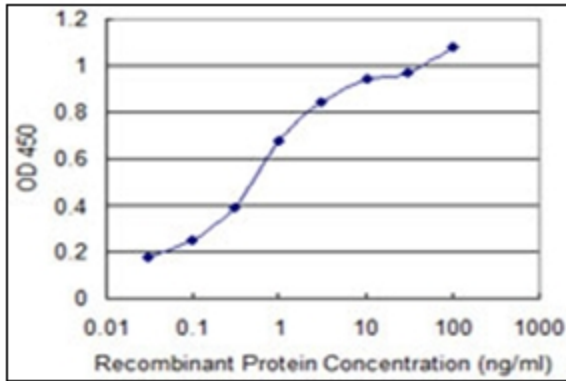
**Protein Families:**

Transmembrane

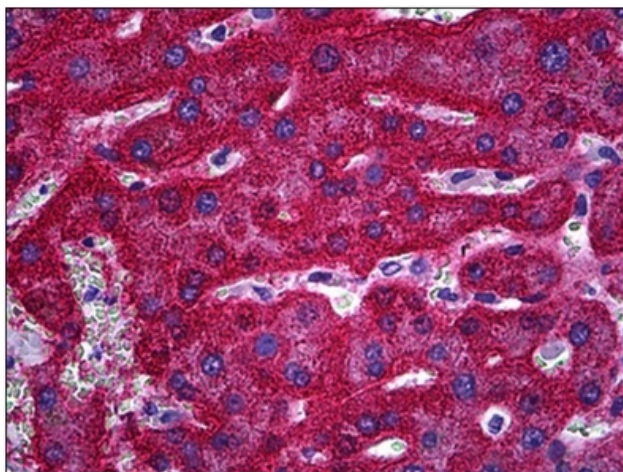
**Product images:**



SLC13A5 monoclonal antibody, clone 2G4.  
Western Blot analysis of SLC13A5 expression in HepG2.



Detection limit for recombinant GST tagged SLC13A5 is 0.03 ng/ml as a capture antibody.



Human Liver: Formalin-Fixed, Paraffin-Embedded (FFPE)