

Product datasheet for **AM31752PU-N**

ErbB 3 (ERBB3) Mouse Monoclonal Antibody [Clone ID: 2E9]

Product data:

Product Type:	Primary Antibodies
Clone Name:	2E9
Applications:	ELISA, IHC, WB
Recommended Dilution:	ELISA. Immunohistochemistry on Paraffin Sections: 5 µg/ml. Western Blot: 1/500 - 1/1000.
Reactivity:	Human
Host:	Mouse
Isotype:	IgG1
Clonality:	Monoclonal
Immunogen:	ERBB3 (AAH02706, 1 a.a. ~ 131 a.a) partial recombinant protein with GST tag.
Specificity:	Recognizes Human ERBB3 / HER3
Formulation:	PBS, pH 7.2 State: Purified State: Liquid purified Ig fraction
Concentration:	lot specific
Purification:	Protein A Chromatography
Conjugation:	Unconjugated
Storage:	Store undiluted at 2-8°C for one month or (in aliquots) at -20°C for longer. Avoid repeated freezing and thawing.
Stability:	Shelf life: one year from despatch.
Gene Name:	erb-b2 receptor tyrosine kinase 3
Database Link:	Entrez Gene 2065 Human P21860



[View online »](#)

Background:

ERBB3 is a member of the epidermal growth factor receptor (EGFR) family of receptor tyrosine kinases. This membrane-bound protein has a neuregulin binding domain but not an active kinase domain. It therefore can bind this ligand but not convey the signal into the cell through protein phosphorylation. However, it does form heterodimers with other EGF receptor family members which do have kinase activity. Heterodimerization leads to the activation of pathways which lead to cell proliferation or differentiation. Amplification of the ERBB3 gene and/or overexpression of its protein have been reported in numerous cancers, including prostate, bladder, and breast tumors. Alternate transcriptional splice variants encoding different isoforms have been characterized. One isoform lacks the intermembrane region and is secreted outside the cell. This form acts to modulate the activity of the membrane-bound form.

Synonyms:

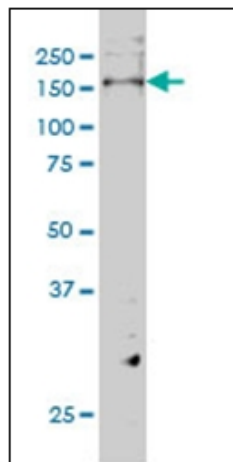
ERBB-3, c-erbB-3, HER-3

Protein Families:

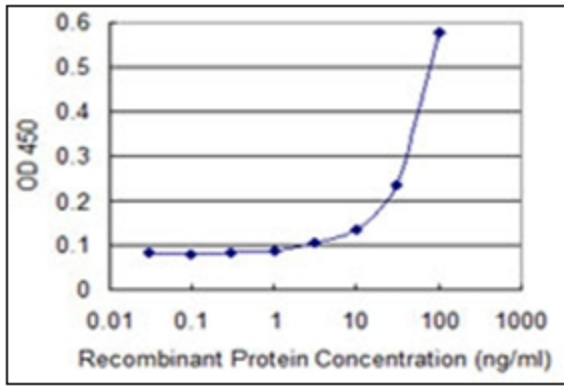
Adult stem cells, Druggable Genome, Protein Kinase, Secreted Protein, Stem cell - Pluripotency, Transmembrane

Protein Pathways:

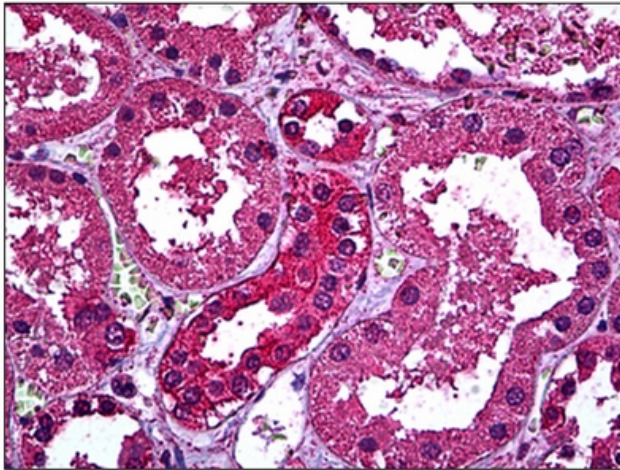
Calcium signaling pathway, Endocytosis, ErbB signaling pathway

Product images:

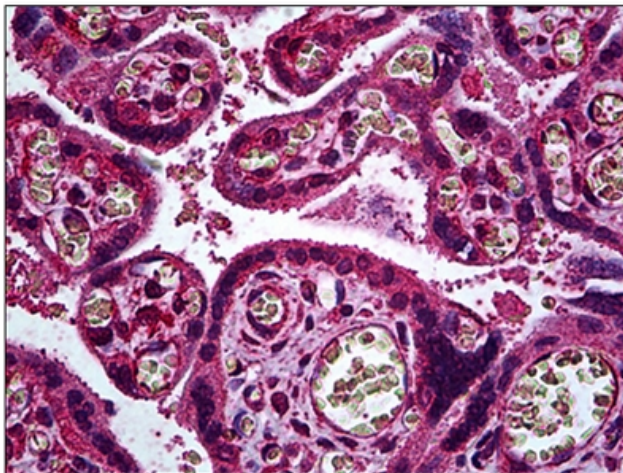
ERBB3 monoclonal antibody, clone 2E9 Western Blot analysis of ERBB3 expression in Hela NE.



Detection limit for recombinant GST tagged ERBB3 is 3 ng/ml as a capture antibody.



Human Kidney: Formalin-Fixed, Paraffin-Embedded (FFPE)



Human Placenta, Trophoblast: Formalin-Fixed, Paraffin-Embedded (FFPE)