

## Product datasheet for **AM31750PU-N**

### CTIP1 (BCL11A) Mouse Monoclonal Antibody [Clone ID: 3D9]

#### Product data:

Product Type:	Primary Antibodies
Clone Name:	3D9
Applications:	ELISA, IHC, WB
Recommended Dilution:	<b>ELISA.</b> <b>Immunohistochemistry on Paraffin Sections:</b> 5 µg/ml. <b>Western Blot:</b> 1/500 - 1/1000.
Reactivity:	Human
Host:	Mouse
Isotype:	IgG2a
Clonality:	Monoclonal
Immunogen:	BCL11A (NP_060484, 1 a.a. ~ 89 a.a) partial recombinant protein with GST tag.
Specificity:	Recognizes Bcl-11A
Formulation:	PBS, pH 7.2 State: Purified State: Liquid purified Ig fraction
Concentration:	lot specific
Purification:	Protein A Chromatography
Conjugation:	Unconjugated
Storage:	Store the antibody undiluted at 2-8°C for one month or (in aliquots) at -20°C for longer. Avoid freeze-thaw cycles.
Stability:	Shelf life: one year from despatch.
Gene Name:	B-cell CLL/lymphoma 11A
Database Link:	<a href="#">Entrez Gene 53335 Human Q9H165</a>



[View online »](#)

**Background:**

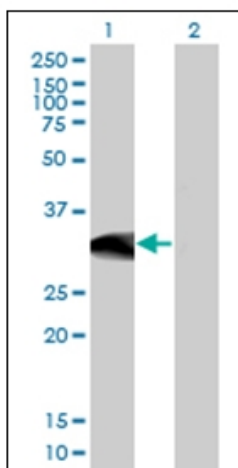
This gene encodes a C2H2 type zinc-finger protein by its similarity to the mouse Bcl11 a/Evi9 protein. The corresponding mouse gene is a common site of retroviral integration in myeloid leukemia, and may function as a leukemia disease gene, in part, through its interaction with BCL6. During hematopoietic cell differentiation, this gene is down-regulated. It is possibly involved in lymphoma pathogenesis since translocations associated with B-cell malignancies also deregulates its expression. Multiple transcript variants encoding several different isoforms have been found for this gene.

**Synonyms:**

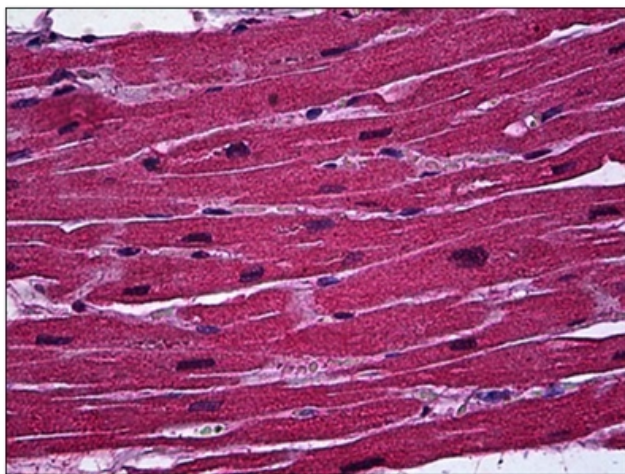
BCL11A, CTIP1, EVI9, KIAA1809

**Protein Families:**

Transcription Factors

**Product images:**

Western Blot analysis of BCL11A expression in transfected 293T cell line by BCL11A monoclonal antibody, clone 3D9.



Human Heart: Formalin-Fixed, Paraffin-Embedded (FFPE)