

## Product datasheet for **AM31749PU-N**

### ATF6 Mouse Monoclonal Antibody [Clone ID: 3D5]

#### Product data:

Product Type:	Primary Antibodies
Clone Name:	3D5
Applications:	ELISA, IHC, WB
Recommended Dilution:	<b>ELISA.</b> <b>Immunohistochemistry on Paraffin Sections:</b> 10 µg/ml. <b>Western Blot:</b> 1/500 - 1/1000.
Reactivity:	Human
Host:	Mouse
Isotype:	IgG2a
Clonality:	Monoclonal
Immunogen:	ATF6 antibody was raised against ATF6 (AAH14969, 91 a.a. ~ 194 a.a) partial recombinant protein with GST tag.
Specificity:	Recognizes ATF6
Formulation:	PBS, pH 7.2 State: Purified State: Liquid purified Ig fraction
Concentration:	lot specific
Purification:	Protein A Chromatography
Conjugation:	Unconjugated
Storage:	Store the antibody undiluted at 2-8°C for one month or (in aliquots) at -20°C for longer. Avoid freeze-thaw cycles.
Stability:	Shelf life: one year from despatch.
Gene Name:	activating transcription factor 6
Database Link:	<a href="#">Entrez Gene 22926 Human P18850</a>



[View online »](#)

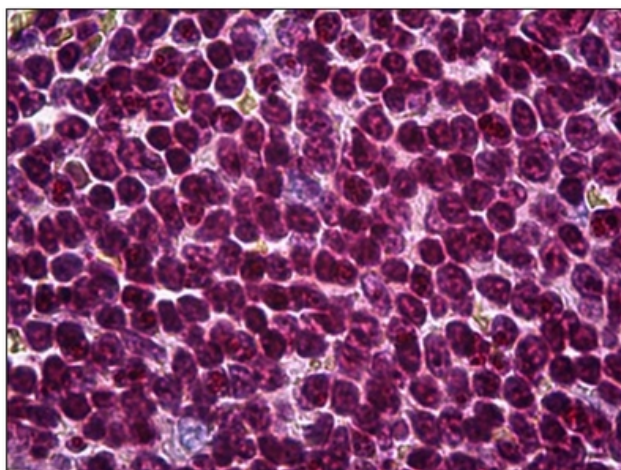
**Background:** Activating Transcription Factor 6 (ATF6) is a type II transmembrane glycoprotein located on the ER membrane. In response to ER stress ATF6 is cleaved and the N-terminus including the leucine zipper (which faces the cytosol) moves to the nucleus. Once in the nucleus ATF6 binds to the ER stress response elements in ER stress genes. Site-1 and site-2 protease enzymes that process sterol regulatory binding proteins in response to cholesterol derivation cleave ATF6.

**Synonyms:** ATF-6, Activating transcription factor 6 alpha

**Protein Families:** Transcription Factors

**Protein Pathways:** Alzheimer's disease

### Product images:



Human Spleen: Formalin-Fixed, Paraffin-Embedded (FFPE)