

## Product datasheet for **AM31748PU-N**

### ATF5 Mouse Monoclonal Antibody [Clone ID: 4G5]

#### Product data:

Product Type:	Primary Antibodies
Clone Name:	4G5
Applications:	ELISA, IHC, WB
Recommended Dilution:	<b>ELISA.</b> <b>Immunohistochemistry on Paraffin Sections:</b> 5 µg/ml. <b>Western Blot:</b> 1/500 - 1/1000.
Reactivity:	Human
Host:	Mouse
Isotype:	IgG2a
Clonality:	Monoclonal
Immunogen:	ATF5 antibody was raised against ATF5 (AAH05174, 101 a.a. ~ 200 a.a) partial recombinant protein with GST tag.
Specificity:	Recognizes ATF5
Formulation:	PBS, pH 7.2 State: Purified State: Liquid purified Ig fraction
Concentration:	lot specific
Purification:	Protein A Chromatography
Conjugation:	Unconjugated
Storage:	Store the antibody undiluted at 2-8°C for one month or (in aliquots) at -20°C for longer. Avoid freeze-thaw cycles.
Stability:	Shelf life: one year from despatch.
Gene Name:	activating transcription factor 5
Database Link:	<a href="#">Entrez Gene 22809 Human Q9Y2D1</a>
Background:	ATF5 or Activating transcription factor 5, binds to cAMP-inducible promoters and is involved in gene transcription. This protein binds the cAMP response element (CRE) (consensus: 5'-GTGACGT[AC][AG]-3'), a sequence present in many viral and cellular promoters.

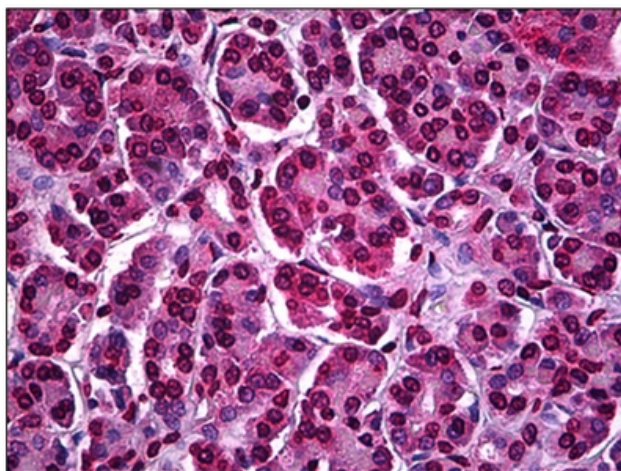


[View online »](#)

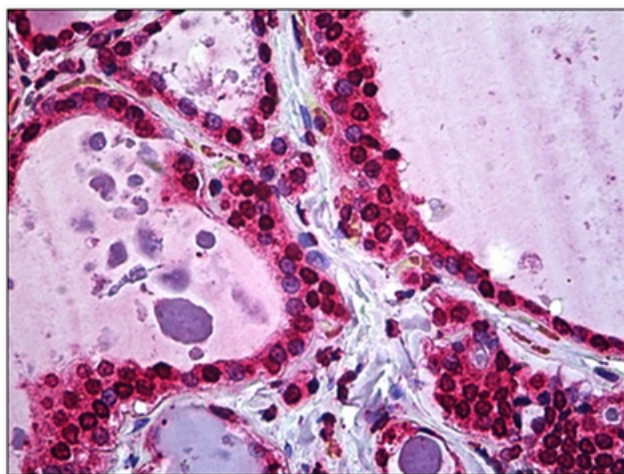
Synonyms: ATF-5, ATFX, Activating transcription factor 5

Protein Families: Transcription Factors

**Product images:**



Human Pancreas: Formalin-Fixed, Paraffin-Embedded (FFPE)



Human Thyroid: Formalin-Fixed, Paraffin-Embedded (FFPE)