

## Product datasheet for **AM31742PU-N**

### CACNA2D2 (65-163) Mouse Monoclonal Antibody [Clone ID: 3A4]

#### Product data:

Product Type:	Primary Antibodies
Clone Name:	3A4
Applications:	ELISA, IHC, WB
Recommended Dilution:	<b>ELISA.</b> <b>Immunohistochemistry on Paraffin Sections:</b> 5 µg/ml. <b>Western Blot:</b> 1/500 - 1/1000.
Reactivity:	Human
Host:	Mouse
Isotype:	IgG2a
Clonality:	Monoclonal
Immunogen:	CACNA2D2 antibody was raised against CACNA2D2 (NP_006021, 65 a.a. ~ 163 a.a) partial recombinant protein with GST tag.
Specificity:	Recognizes Human CACNA2D2.
Formulation:	PBS, pH 7.4 State: Purified State: Liquid purified Ig fraction
Concentration:	lot specific
Purification:	Protein A Chromatography
Conjugation:	Unconjugated
Storage:	RecognizStore the antibody undiluted at 2-8°C for one month or (in aliquots) at -20°C for longer. Avoid freeze-thaw cycles.
Stability:	Shelf life: one year from despatch. es
Gene Name:	calcium voltage-gated channel auxiliary subunit alpha2delta 2
Database Link:	<a href="#">Entrez Gene 9254 Human Q9NY47</a>



[View online »](#)

**Background:**

Cacna2d2 is an alpha subunit 2/delta regulatory subunit of the voltage-gated calcium channel. The human Cacna2d2 corresponds to the mouse mutant ducky phenotype, which is a model for absence epilepsy, characterized by seizures and ataxia. CACNA2D2 overexpression has been implicated in the apoptosis of NSCLC cells by changing the intracellular calcium concentration and disrupting the mitochondrial membrane.

**Synonyms:**

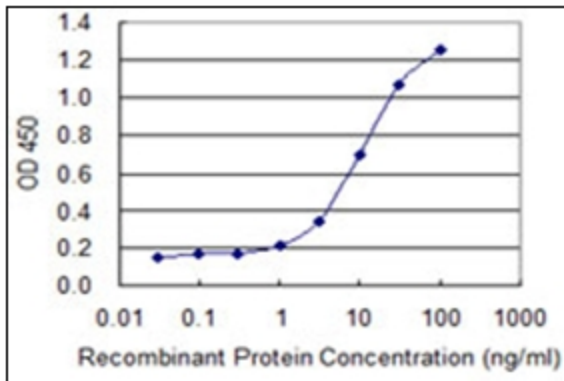
KIAA0558

**Protein Families:**

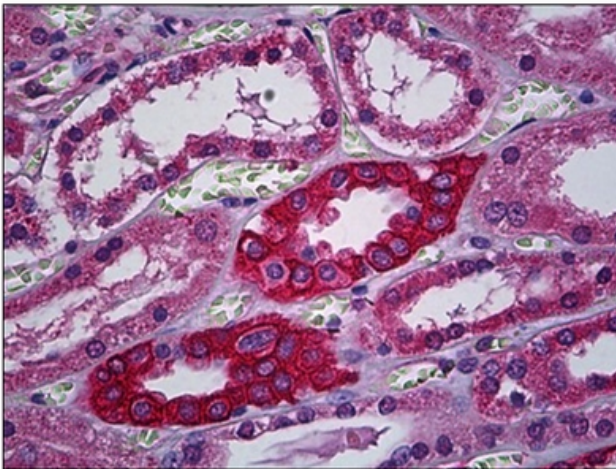
Druggable Genome, Ion Channels: Other

**Protein Pathways:**

Arrhythmogenic right ventricular cardiomyopathy (ARVC), Cardiac muscle contraction, Dilated cardiomyopathy, Hypertrophic cardiomyopathy (HCM), MAPK signaling pathway

**Product images:**

Detection limit for recombinant GST tagged CACNA2D2 is 0.3 ng/ml as a capture antibody.



Human Kidney, Tubules: Formalin-Fixed, Paraffin-Embedded (FFPE)