

## Product datasheet for **AM31740PU-N**

### CREB1 Mouse Monoclonal Antibody [Clone ID: 5F2]

#### Product data:

Product Type:	Primary Antibodies
Clone Name:	5F2
Applications:	ELISA, IHC, WB
Recommended Dilution:	<b>ELISA.</b> <b>Immunohistochemistry on Paraffin Sections:</b> 5 µg/ml. <b>Western Blot:</b> 1/500 - 1/1000.
Reactivity:	Human
Host:	Mouse
Isotype:	IgG2a
Clonality:	Monoclonal
Immunogen:	CREB1 antibody was raised against cCREB1 (AAH10636, 1 a.a. ~ 342 a.a) full length recombinant protein with GST tag.
Specificity:	Recognizes CREB1
Formulation:	PBS, pH 7.2 State: Purified State: Liquid purified Ig fraction
Purification:	Protein A Chromatography
Conjugation:	Unconjugated
Storage:	Store the antibody (in aliquots) at -20°C or -80°C. Avoid freeze-thaw cycles.
Stability:	Shelf life: one year from despatch.
Gene Name:	cAMP responsive element binding protein 1
Database Link:	<a href="#">Entrez Gene 1385 Human P16220</a>



[View online »](#)

**Background:**

CREB (cAMP response element binding protein1), a DNA binding protein, is a member of the leucine zipper family of transcription factors. CREB interaction with DNA requires phosphorylation at Ser 119 by activated cAMP protein kinase A. Once phosphorylated CREB binds to an 8 base enhancer known as the cAMP response element (CRE) containing a conserved core sequence TGACG. CREB also interacts with CBP (CREB binding protein) and RNA polymerase II when phosphorylated on Ser 133. Different isoforms of this protein are the result of two transcript variants.

**Synonyms:**

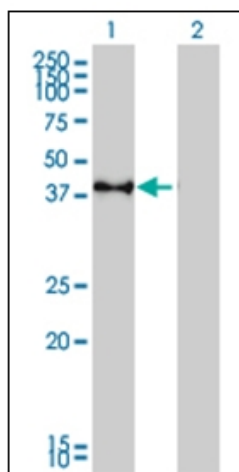
CREB-1

**Protein Families:**

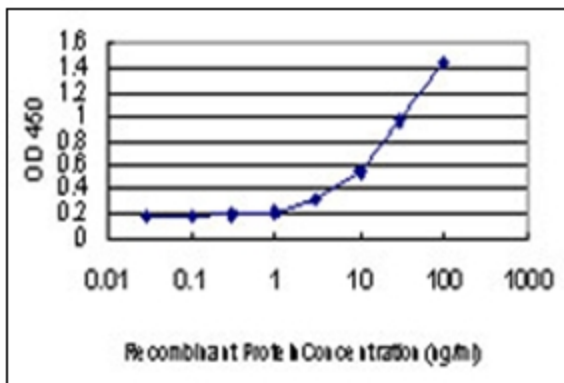
Druggable Genome, Transcription Factors

**Protein Pathways:**

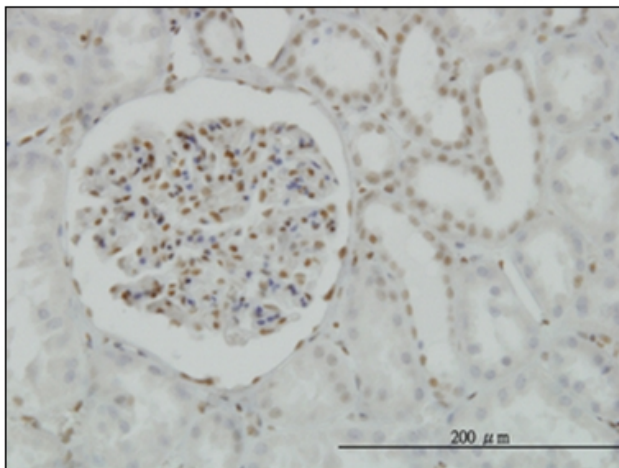
Antigen processing and presentation, Huntington's disease, Melanogenesis, Prostate cancer

**Product images:**


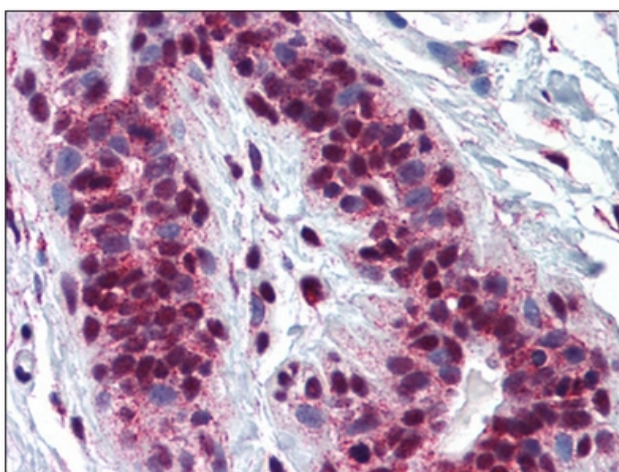
Western Blot analysis of CREB1 expression in transfected 293T cell line. Lane 1: CREB1 transfected lysate (37 KDa). Lane 2: Non-transfected lysate.



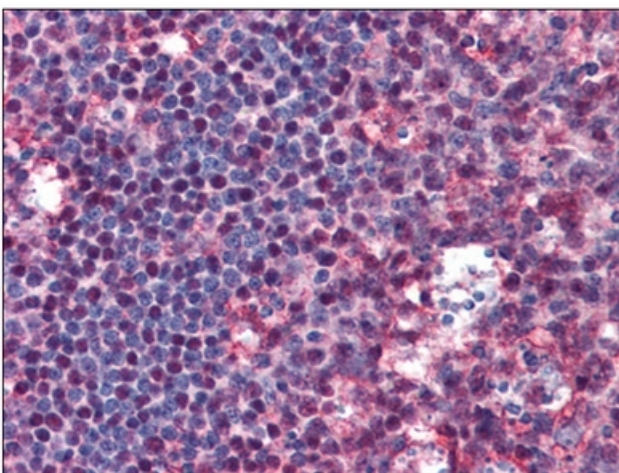
Detection limit for recombinant GST tagged CREB1 is approximately 1ng/ml as a capture antibody.



Immunoperoxidase of Monoclonal Antibody to CREB1 on formalin-fixed paraffin-embedded human kidney at 1 ug/ml.



Human Breast: Formalin-Fixed, Paraffin-Embedded (FFPE)



Human Tonsil: Formalin-Fixed, Paraffin-Embedded (FFPE)