

## Product datasheet for **AM31738PU-N**

### RCC1 Mouse Monoclonal Antibody [Clone ID: 2F1]

#### Product data:

Product Type:	Primary Antibodies
Clone Name:	2F1
Applications:	ELISA, IF, IHC, WB
Recommended Dilution:	<b>ELISA.</b> <b>Immunofluorescence:</b> 10 µg/ml. <b>Immunohistochemistry on Paraffin Sections:</b> 5 µg/ml. <b>Western Blot:</b> 1/500 - 1/1000.
Reactivity:	Human
Host:	Mouse
Isotype:	IgG1
Clonality:	Monoclonal
Immunogen:	RCC1 antibody was raised against RCC1 (AAH07300, 312 a.a. ~ 421 a.a) partial recombinant protein with GST tag.
Specificity:	Recognizes RCC1 / CHC1.
Formulation:	PBS, pH 7.2 State: Purified State: Liquid purified Ig fraction
Concentration:	lot specific
Purification:	Protein A Chromatography
Conjugation:	Unconjugated
Storage:	Store the antibody (in aliquots) at -20°C or -80°C. Avoid freeze-thaw cycles.
Stability:	Shelf life: one year from despatch.
Gene Name:	regulator of chromosome condensation 1
Database Link:	<a href="#">Entrez Gene 1104 Human</a> <a href="#">P18754</a>



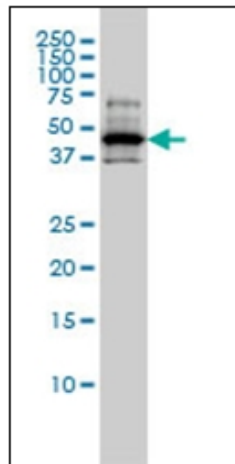
[View online »](#)

**Background:**

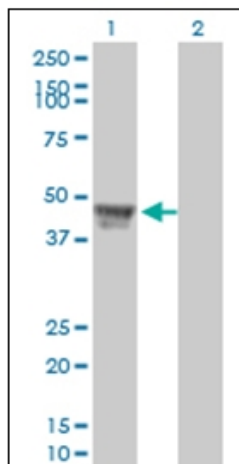
RCC1 promotes the exchange of Ran-bound GDP by GTP. It is involved in the regulation of onset of chromosome condensation in the S phase. RCC1 binds to chromatin. The RCC1/Ran complex (together with other proteins) acts as a component of a signal transmission pathway that detects unreplicated DNA. Patients with Raynaud disease produce antibodies that bind to RCC1.

**Synonyms:**

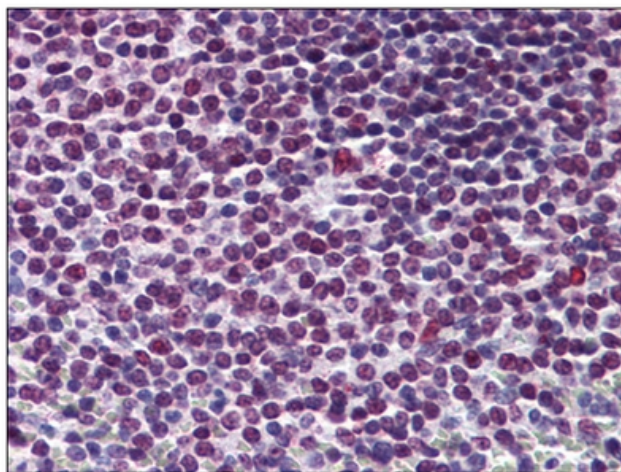
RCC1-I

**Product images:**

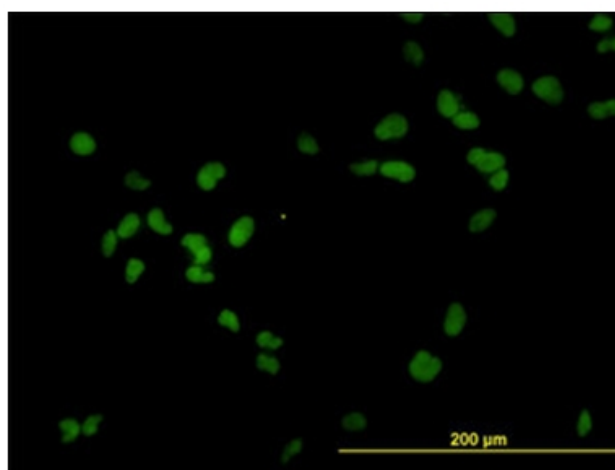
Western Blot analysis of RCC1 expression in A-431 cell lysate.



Western Blot analysis of RCC1 expression in transfected 293T cell line. Lane 1: RCC1 transfected lysate (45 KDa). Lane 2: Non-transfected lysate.



Human Spleen: Formalin-Fixed, Paraffin-Embedded (FFPE)



Immunofluorescence of monoclonal antibody to RCC1 on HeLa cell at 10 mg/ml.